

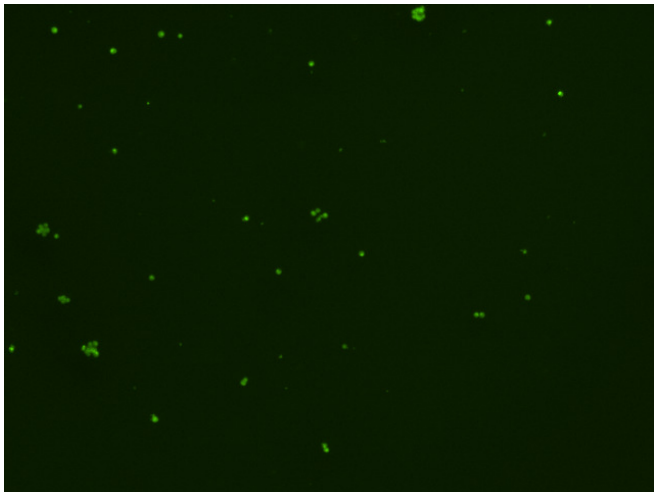
Assay: Stem cells

Sample ID: B-CI4_A.1

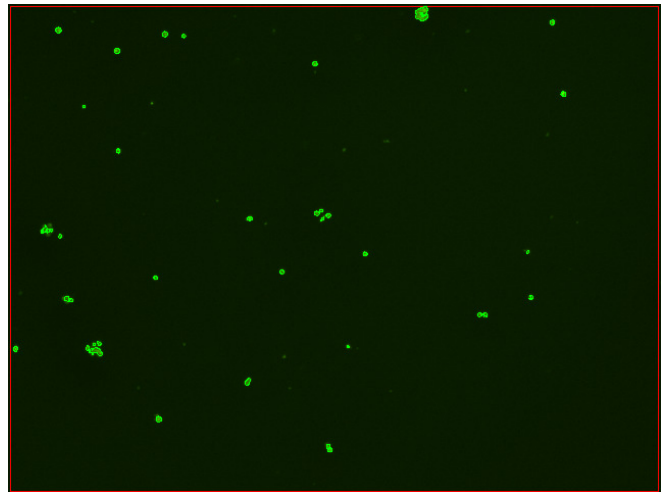
Dilution Factor: 2.00

Count	Concentration	Mean Diameter
===== Total: 183 cells	===== 6.37x10 ⁵ cells/mL	===== 9.1 microns
Live: 125 cells	4.36x10 ⁵ cells/mL	9.3 microns
Dead: 58 cells	2.02x10 ⁵ cells/mL	8.7 microns

Viability: 68.3%



Original Images



Counted Images

