

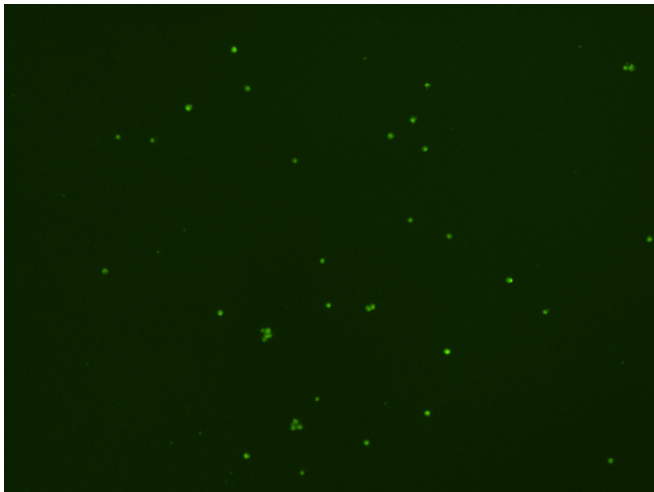
Assay: Stem cells

Sample ID: B-CI4_A.2

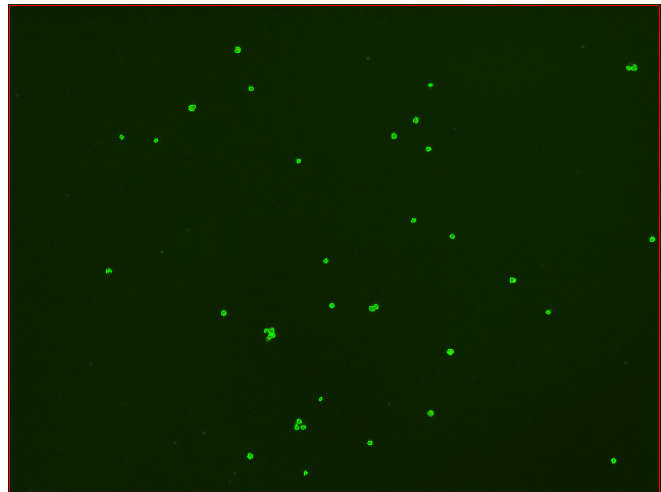
Dilution Factor: 2.00

Count	Concentration	Mean Diameter
=====	=====	=====
Total: 203 cells	7.06×10^5 cells/mL	8.8 microns
Live: 149 cells	5.18×10^5 cells/mL	8.7 microns
Dead: 54 cells	1.88×10^5 cells/mL	9.1 microns

Viability: 73.4%



Original Images



Counted Images

