

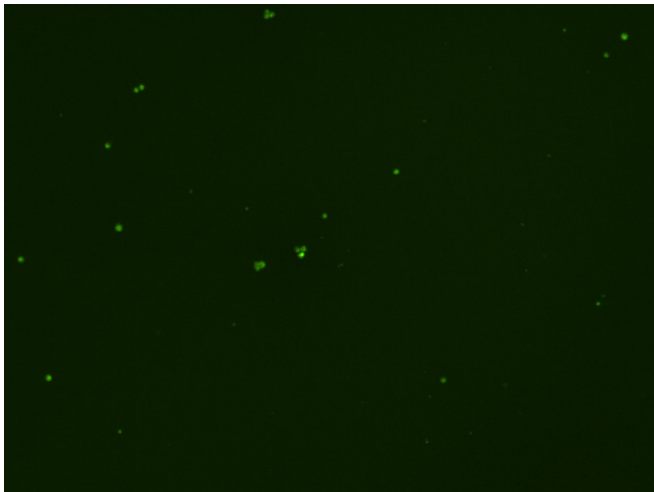
Assay: Stem cells

Sample ID: B-CI4_A.3

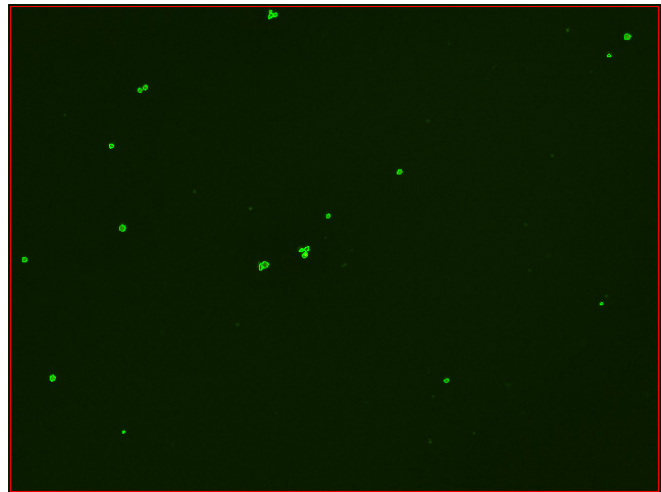
Dilution Factor: 2.00

Count	Concentration	Mean Diameter
=====	=====	=====
Total: 143 cells	4.98×10^5 cells/mL	9.2 microns
Live: 100 cells	3.49×10^5 cells/mL	9.4 microns
Dead: 43 cells	1.50×10^5 cells/mL	8.6 microns

Viability: 70.0%



Original Images



Counted Images

