

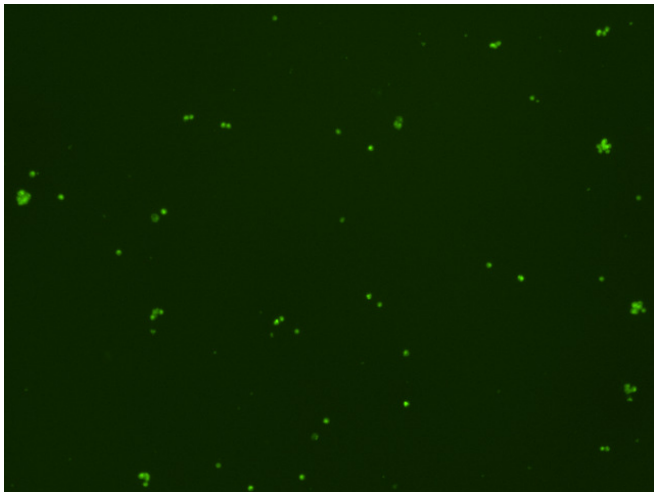
## Assay: Stem cells

Sample ID: B-CI4\_B.1

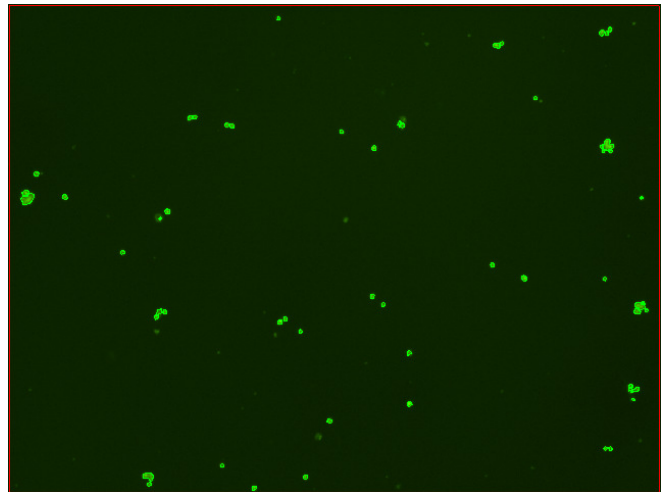
Dilution Factor: 2.00

Count	Concentration	Mean Diameter
===== Total: 211 cells Live: 166 cells Dead: 45 cells	===== 7.35x10 <sup>5</sup> cells/mL 5.78x10 <sup>5</sup> cells/mL 1.57x10 <sup>5</sup> cells/mL	===== 9.1 microns 9.2 microns 8.8 microns

Viability: 78.7%



Original Images



Counted Images

