

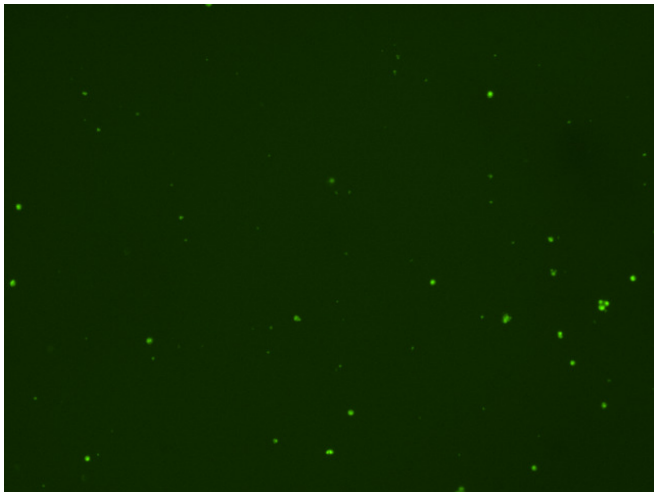
## Assay: Stem cells

Sample ID: B-CI4\_B.2

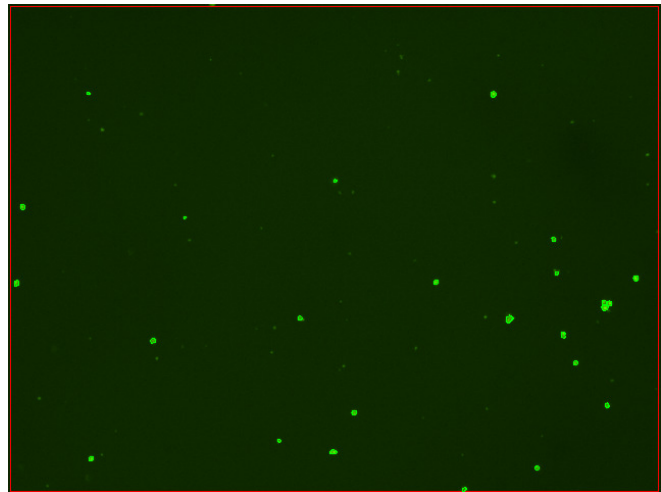
Dilution Factor: 2.00

Count	Concentration	Mean Diameter
=====	=====	=====
Total: 277 cells	$9.67 \times 10^5$ cells/mL	9.8 microns
Live: 176 cells	$6.16 \times 10^5$ cells/mL	10.4 microns
Dead: 101 cells	$3.52 \times 10^5$ cells/mL	8.9 microns

Viability: 63.6%



Original Images



Counted Images

