

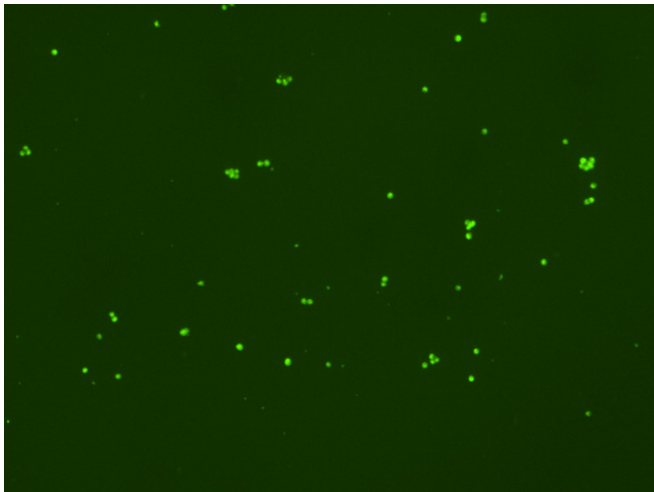
Assay: Stem cells

Sample ID: B-CI4_B.3

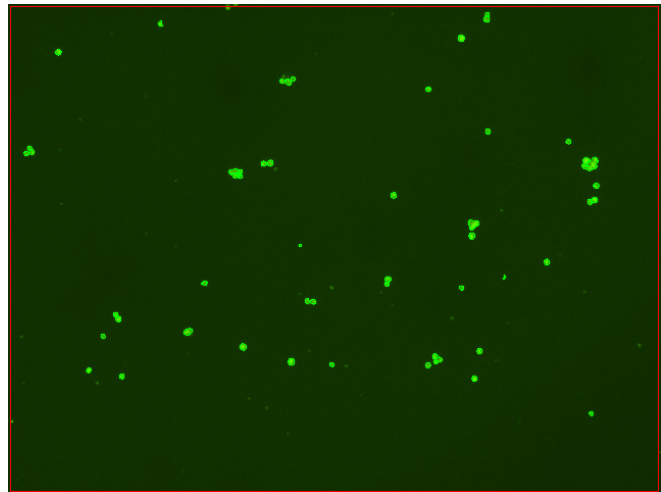
Dilution Factor: 2.00

Count	Concentration	Mean Diameter
=====	=====	=====
Total: 208 cells	7.29×10^5 cells/mL	10.8 microns
Live: 162 cells	5.68×10^5 cells/mL	11.4 microns
Dead: 46 cells	1.60×10^5 cells/mL	8.9 microns

Viability: 78.0%



Original Images



Counted Images

