

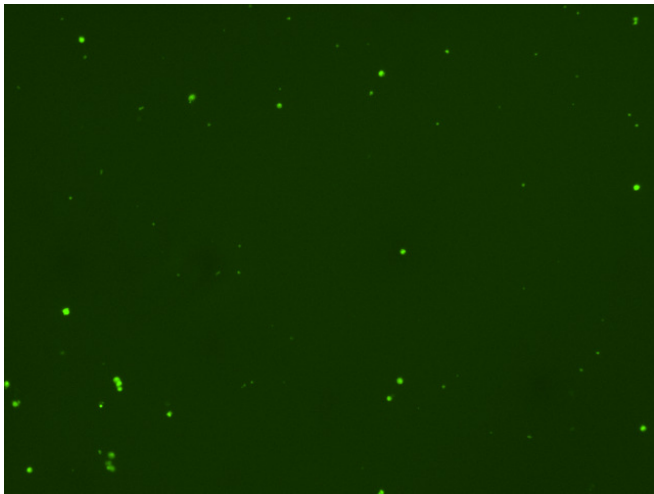
Assay: Stem cells

Sample ID: B-CI4_C.1

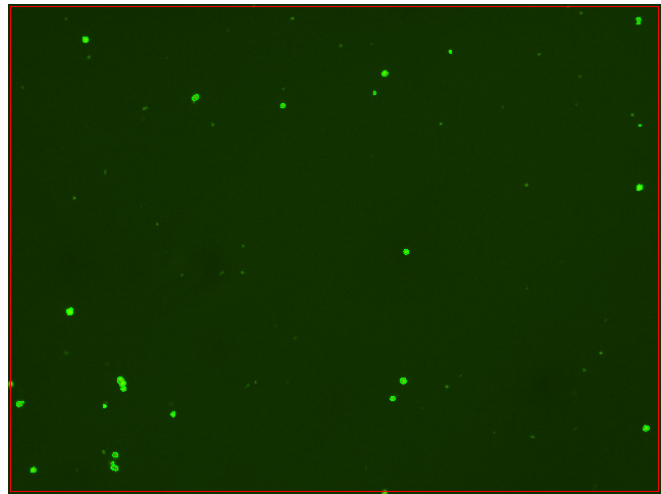
Dilution Factor: 2.00

Count	Concentration	Mean Diameter
=====	=====	=====
Total: 248 cells	8.67×10^5 cells/mL	10.4 microns
Live: 165 cells	5.78×10^5 cells/mL	11.1 microns
Dead: 83 cells	2.89×10^5 cells/mL	9.0 microns

Viability: 66.7%



Original Images



Counted Images

