

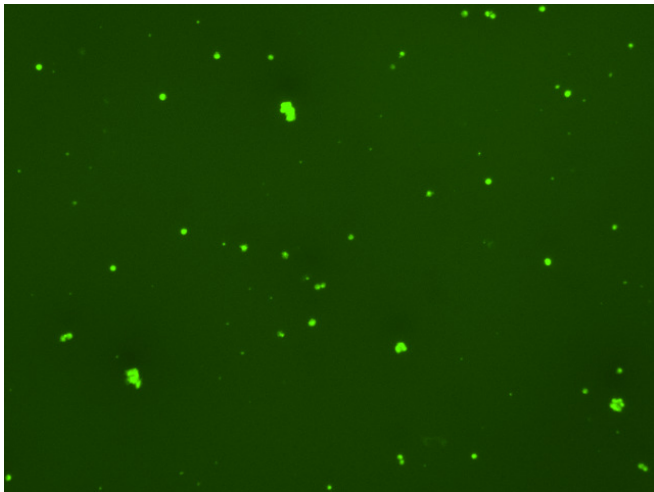
Assay: Stem cells

Sample ID: B-CI4_C.2

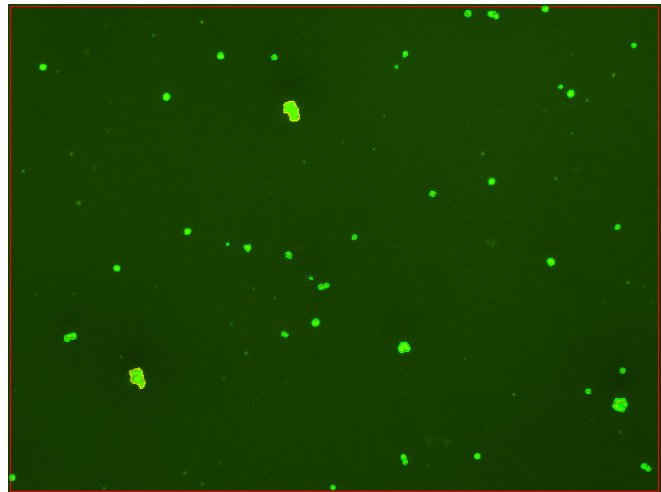
Dilution Factor: 2.00

Count	Concentration	Mean Diameter
===== Total: 171 cells Live: 129 cells Dead: 42 cells	===== 6.00x10 ⁵ cells/mL 4.54x10 ⁵ cells/mL 1.46x10 ⁵ cells/mL	===== 11.4 microns 12.3 microns 8.5 microns

Viability: 75.7%



Original Images



Counted Images

