

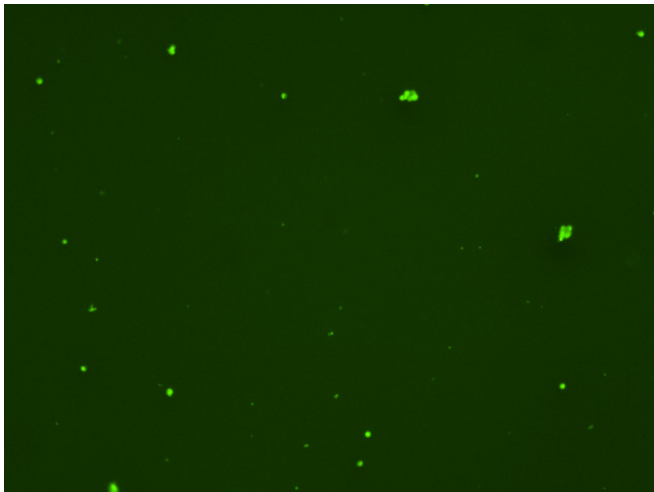
Assay: Stem cells

Sample ID: B-CI4_C.3

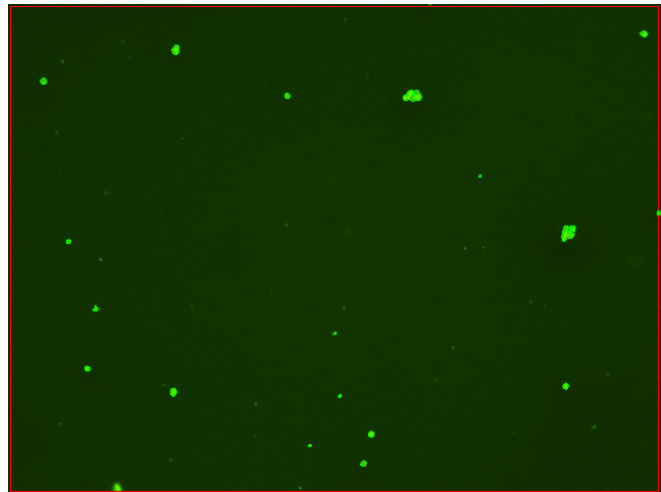
Dilution Factor: 2.00

Count	Concentration	Mean Diameter
===== Total: 154 cells	===== 5.38x10 ⁵ cells/mL	===== 10.2 microns
Live: 119 cells	4.17x10 ⁵ cells/mL	10.8 microns
Dead: 35 cells	1.22x10 ⁵ cells/mL	8.2 microns

Viability: 77.4%



Original Images



Counted Images

