

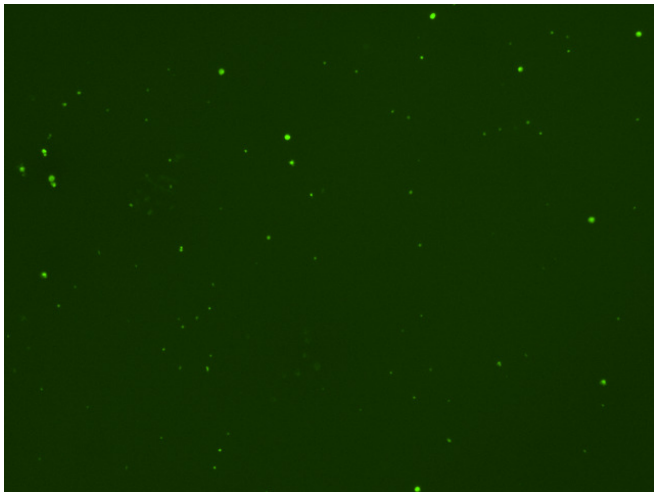
Assay: Stem cells

Sample ID: B-CI4_CS10.1

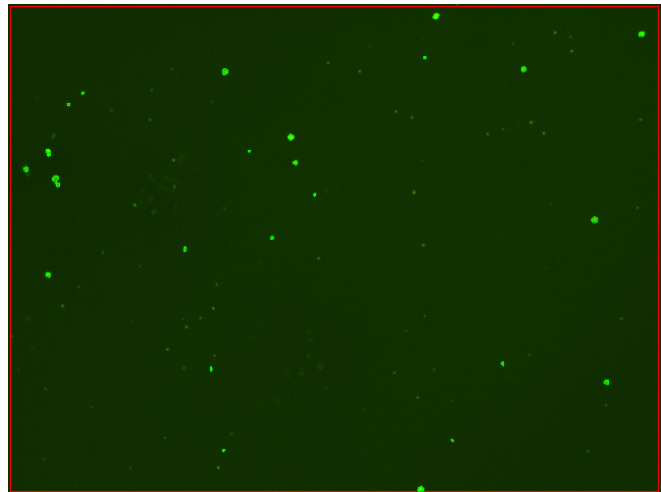
Dilution Factor: 2.00

Count	Concentration	Mean Diameter
===== Total: 219 cells	===== 7.65x10 ⁵ cells/mL	===== 9.9 microns
Live: 138 cells	4.83x10 ⁵ cells/mL	10.6 microns
Dead: 81 cells	2.82x10 ⁵ cells/mL	8.8 microns

Viability: 63.1%



Original Images



Counted Images

