

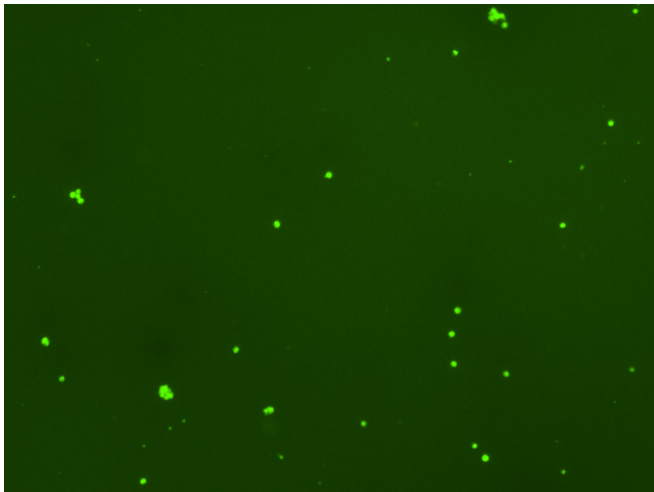
Assay: Stem cells

Sample ID: B-CI4_CS10.2

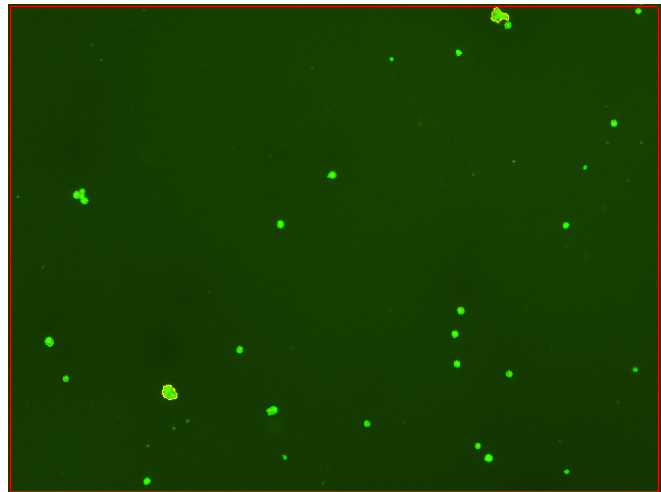
Dilution Factor: 2.00

Count	Concentration	Mean Diameter
=====	=====	=====
Total: 150 cells	5.26×10^5 cells/mL	11.2 microns
Live: 115 cells	4.04×10^5 cells/mL	12.0 microns
Dead: 35 cells	1.22×10^5 cells/mL	8.5 microns

Viability: 76.9%



Original Images



Counted Images

