

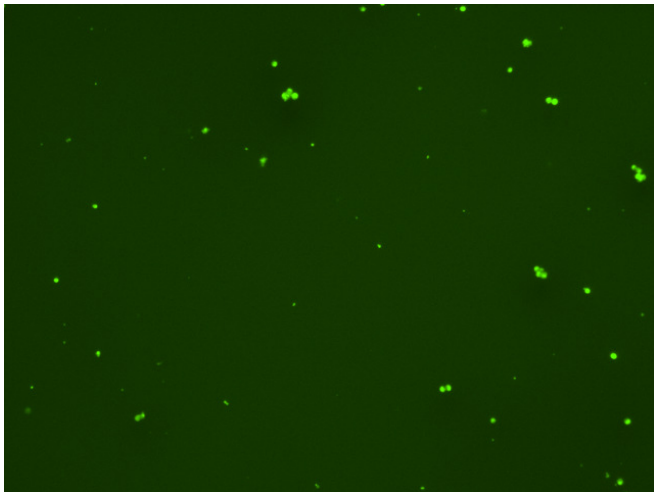
Assay: Stem cells

Sample ID: B-CI4_CS10.3

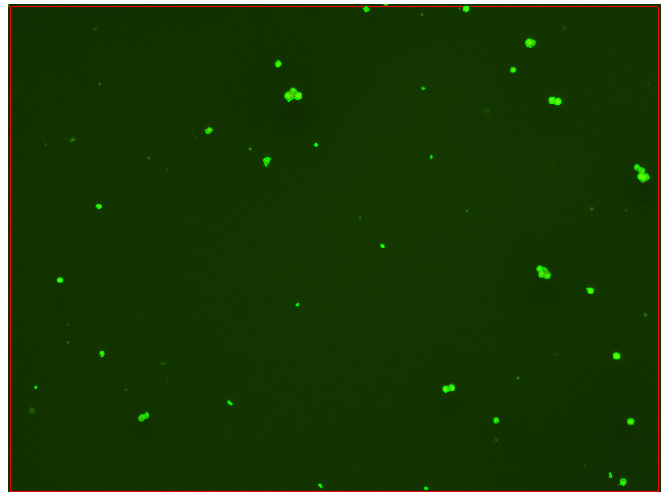
Dilution Factor: 2.00

Count	Concentration	Mean Diameter
===== Total: 149 cells Live: 120 cells Dead: 29 cells	===== 5.23x10 ⁵ cells/mL 4.22x10 ⁵ cells/mL 1.01x10 ⁵ cells/mL	===== 11.4 microns 12.1 microns 8.7 microns

Viability: 80.7%



Original Images



Counted Images

