

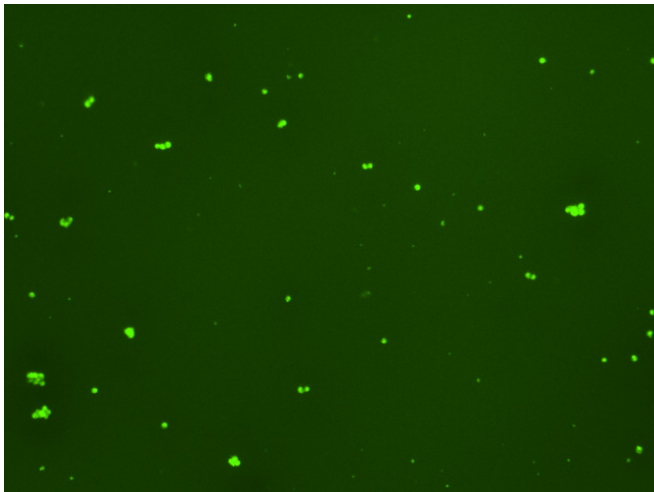
Assay: Stem cells

Sample ID: B-CI4_CS5.1

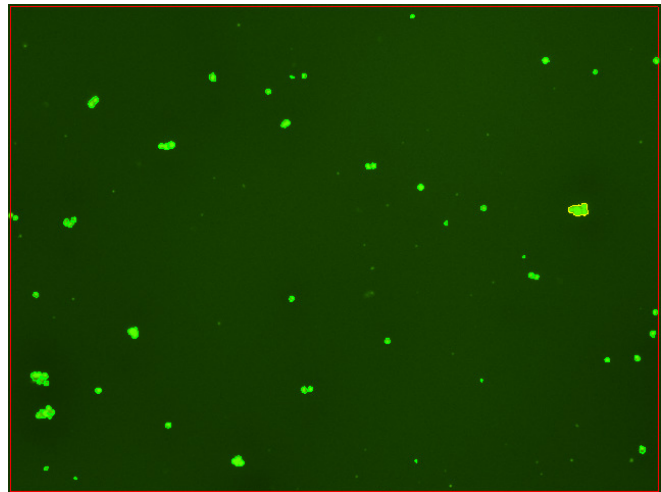
Dilution Factor: 2.00

Count	Concentration	Mean Diameter
=====	=====	=====
Total: 188 cells	6.59×10^5 cells/mL	11.3 microns
Live: 142 cells	4.99×10^5 cells/mL	12.2 microns
Dead: 46 cells	1.60×10^5 cells/mL	8.5 microns

Viability: 75.7%



Original Images



Counted Images

