

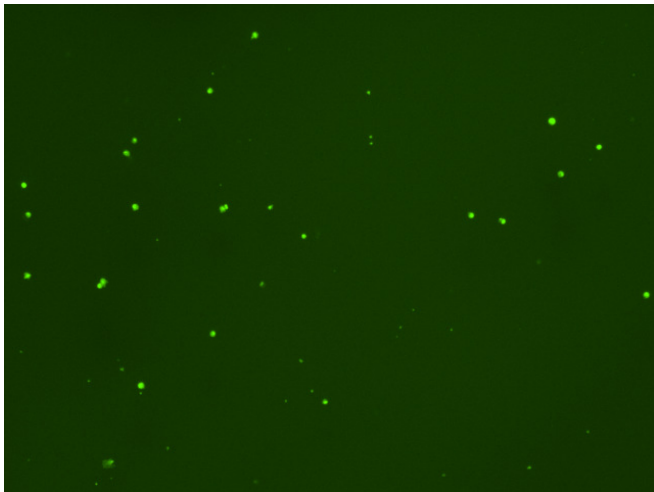
Assay: Stem cells

Sample ID: B-CI4_CS5.2

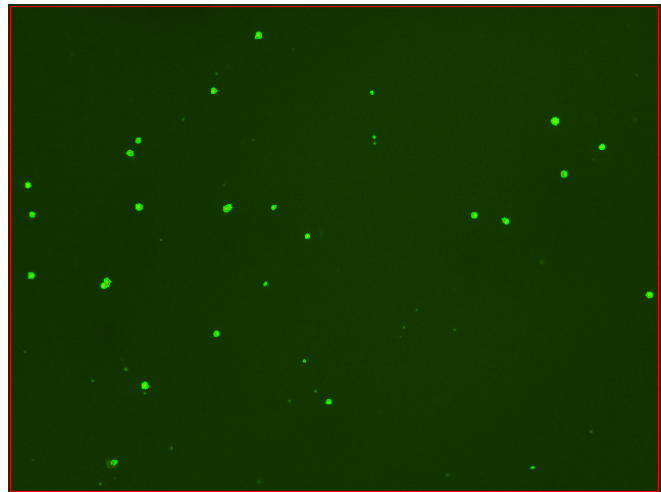
Dilution Factor: 2.00

Count	Concentration	Mean Diameter
=====	=====	=====
Total: 163 cells	5.71×10^5 cells/mL	11.0 microns
Live: 134 cells	4.71×10^5 cells/mL	11.7 microns
Dead: 29 cells	1.01×10^5 cells/mL	8.0 microns

Viability: 82.4%



Original Images



Counted Images

