

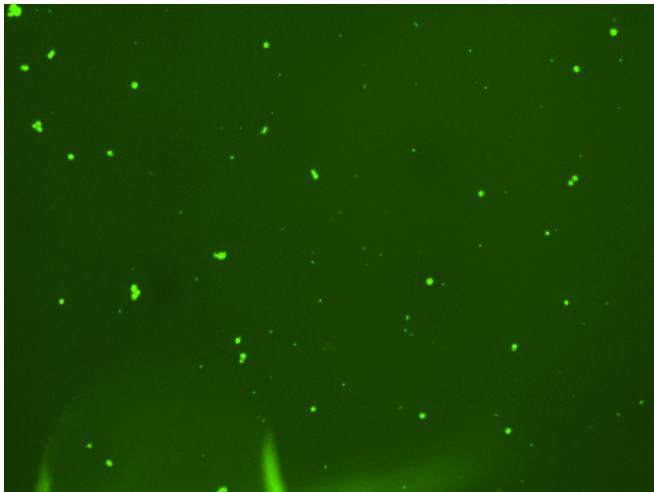
## Assay: Stem cells

Sample ID: B-CI4\_CS5.3

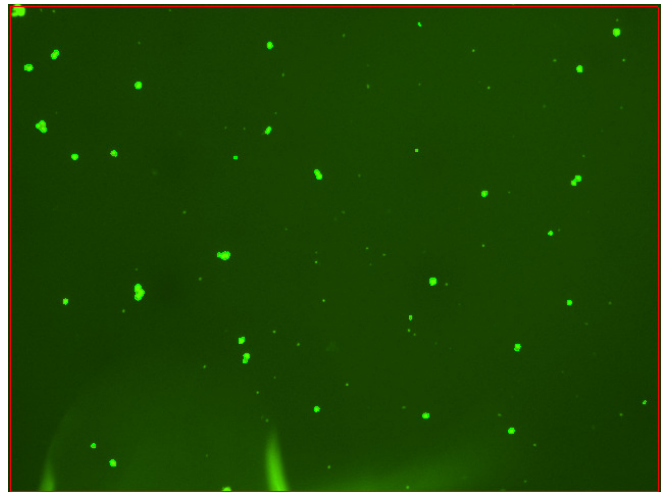
Dilution Factor: 2.00

Count	Concentration	Mean Diameter
===== Total: 209 cells	===== 7.34x10 <sup>5</sup> cells/mL	===== 11.5 microns
Live: 156 cells	5.49x10 <sup>5</sup> cells/mL	12.3 microns
Dead: 53 cells	1.85x10 <sup>5</sup> cells/mL	9.2 microns

Viability: 74.8%



Original Images



Counted Images

