

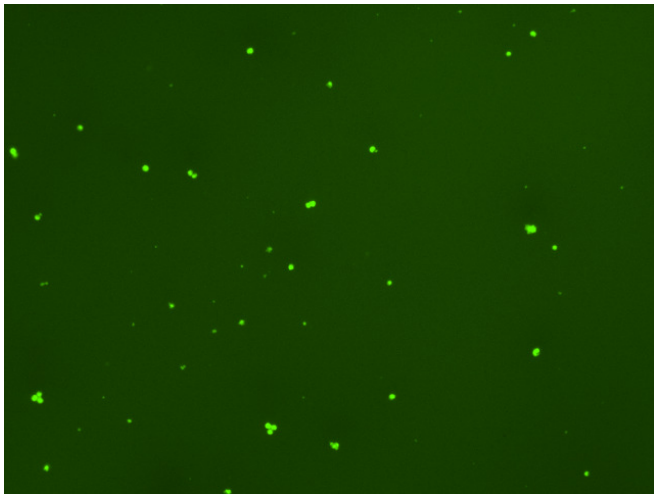
Assay: Stem cells

Sample ID: B-CI4_D.1

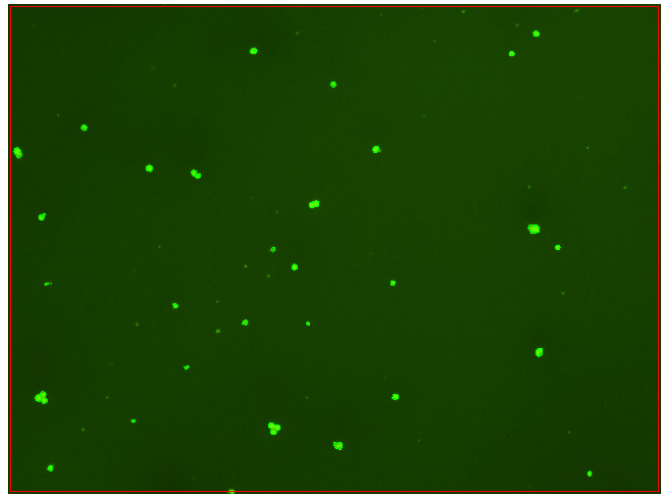
Dilution Factor: 2.00

Count	Concentration	Mean Diameter
===== Total: 165 cells Live: 129 cells Dead: 36 cells	===== 5.78x10 ⁵ cells/mL 4.53x10 ⁵ cells/mL 1.25x10 ⁵ cells/mL	===== 10.8 microns 11.5 microns 8.4 microns

Viability: 78.4%



Original Images



Counted Images

