

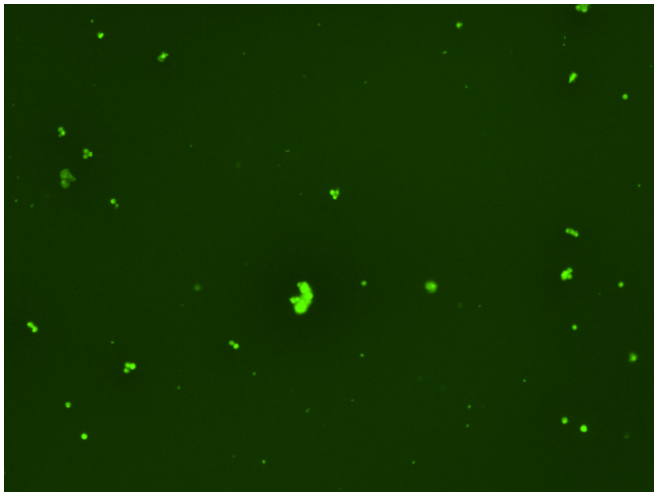
Assay: Stem cells

Sample ID: B-CI4_D.2

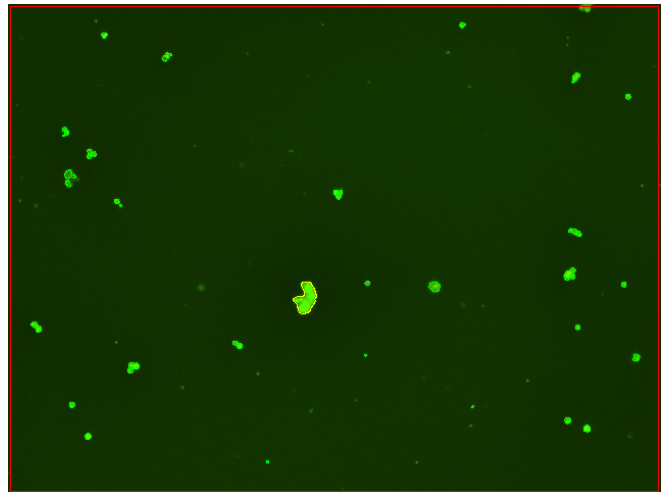
Dilution Factor: 2.00

Count	Concentration	Mean Diameter
===== Total: 219 cells Live: 177 cells Dead: 42 cells	===== 7.67x10 ⁵ cells/mL 6.21x10 ⁵ cells/mL 1.46x10 ⁵ cells/mL	===== 11.0 microns 11.5 microns 9.0 microns

Viability: 80.9%



Original Images



Counted Images

