

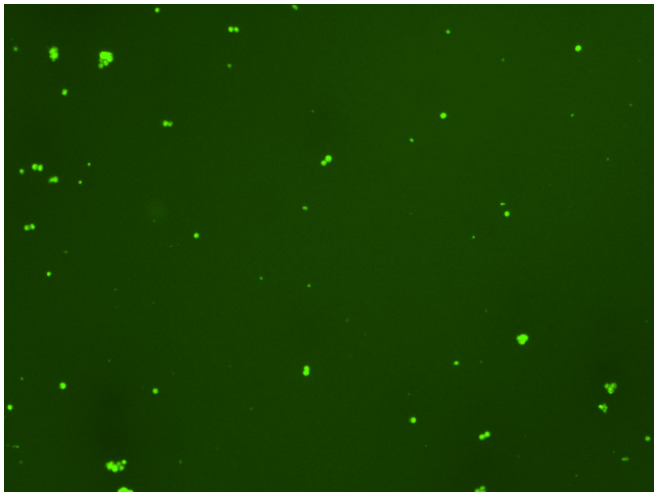
Assay: Stem cells

Sample ID: B-CI4_D.3

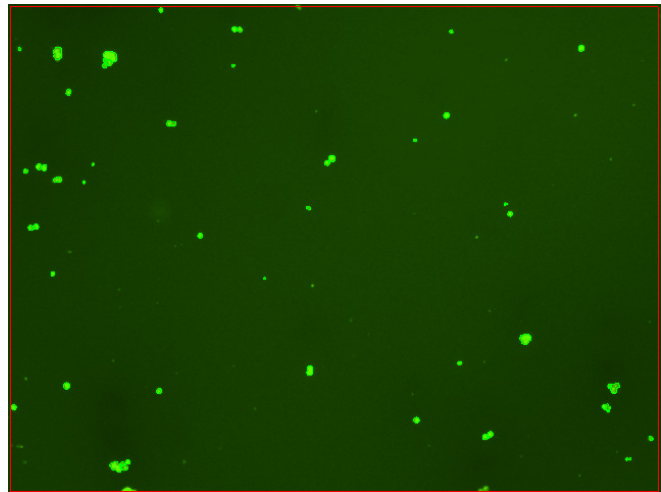
Dilution Factor: 2.00

Count	Concentration	Mean Diameter
=====	=====	=====
Total: 186 cells	6.52×10^5 cells/mL	11.2 microns
Live: 153 cells	5.38×10^5 cells/mL	11.9 microns
Dead: 33 cells	1.15×10^5 cells/mL	8.2 microns

Viability: 82.4%



Original Images



Counted Images

