

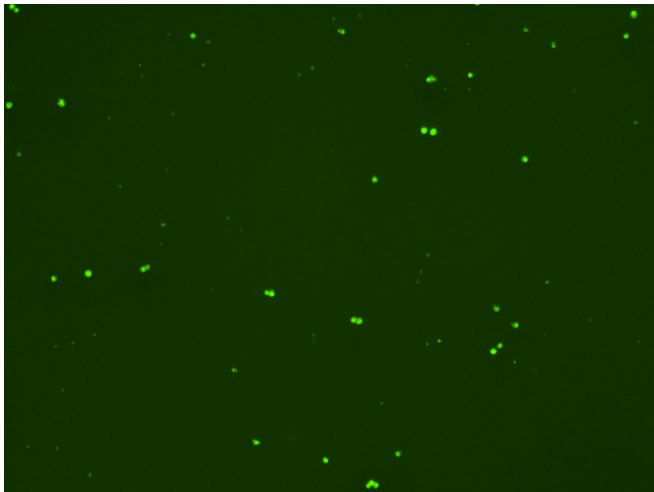
## Assay: Stem cells

Sample ID: B-CI4\_E.1

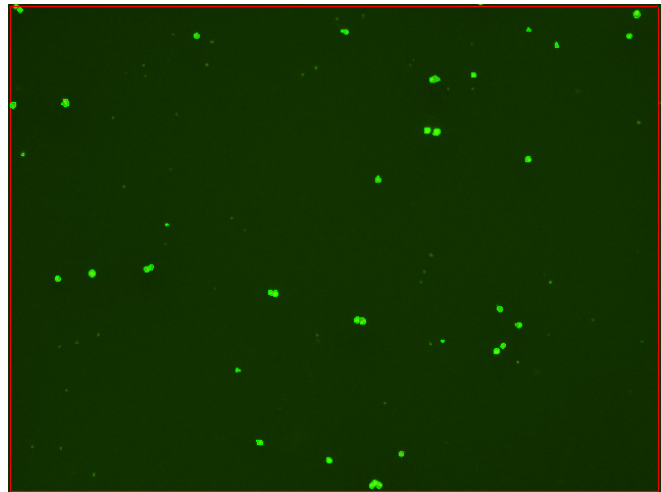
Dilution Factor: 2.00

Count	Concentration	Mean Diameter
===== Total: 242 cells Live: 183 cells Dead: 59 cells	===== 8.48x10 <sup>5</sup> cells/mL 6.43x10 <sup>5</sup> cells/mL 2.05x10 <sup>5</sup> cells/mL	===== 11.1 microns 11.9 microns 8.6 microns

Viability: 75.8%



Original Images



Counted Images

