

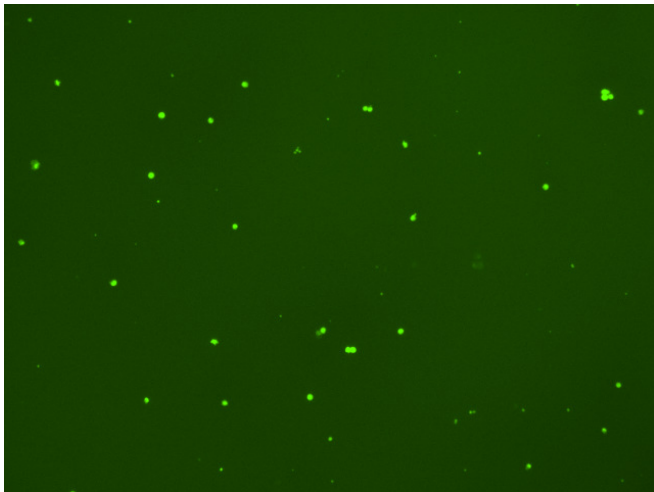
Assay: Stem cells

Sample ID: B-CI4_E.2

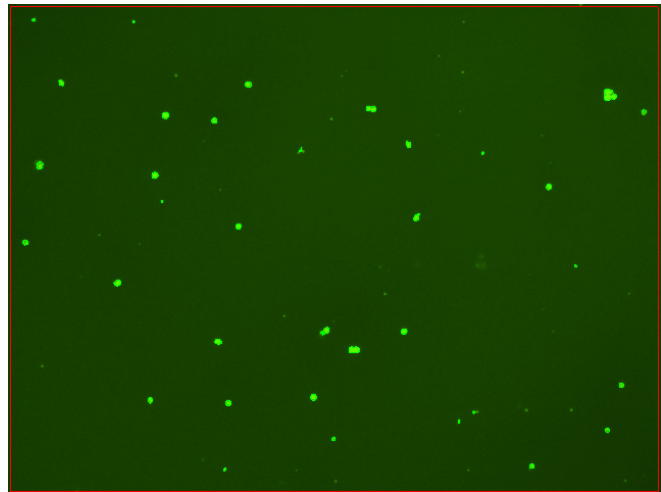
Dilution Factor: 2.00

Count	Concentration	Mean Diameter
=====	=====	=====
Total: 148 cells	5.19×10^5 cells/mL	11.4 microns
Live: 130 cells	4.56×10^5 cells/mL	11.6 microns
Dead: 18 cells	6.28×10^4 cells/mL	9.5 microns

Viability: 87.9%



Original Images



Counted Images

