

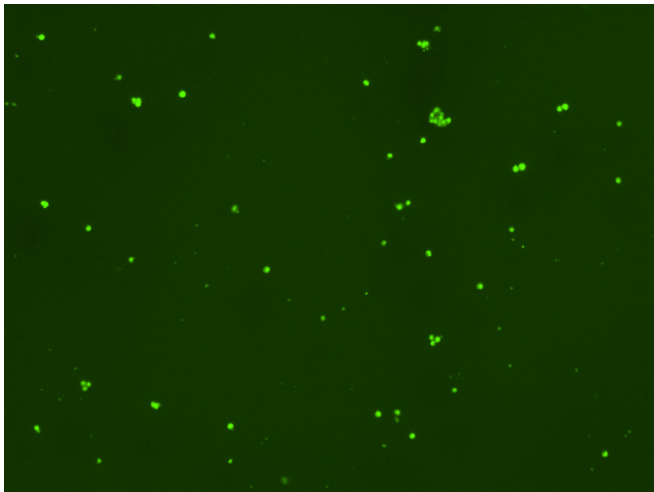
Assay: Stem cells

Sample ID: B-CI4_E.3

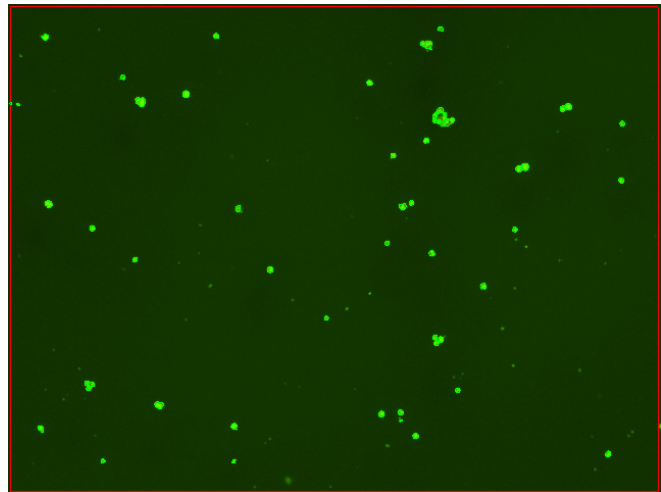
Dilution Factor: 2.00

Count	Concentration	Mean Diameter
=====	=====	=====
Total: 226 cells	7.92×10^5 cells/mL	11.2 microns
Live: 175 cells	6.15×10^5 cells/mL	11.7 microns
Dead: 51 cells	1.78×10^5 cells/mL	9.2 microns

Viability: 77.6%



Original Images



Counted Images

