

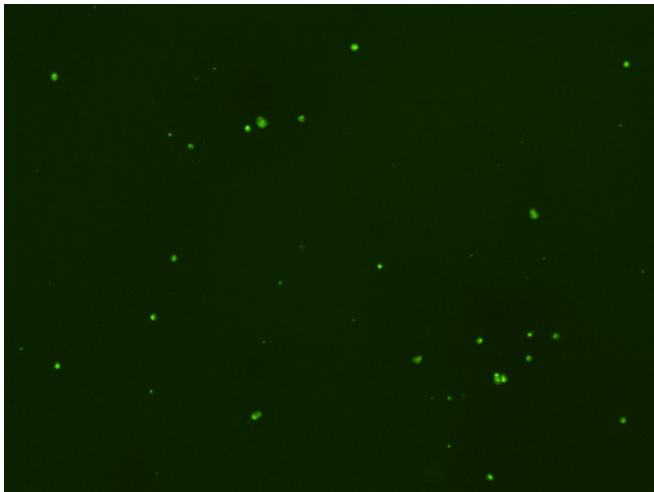
## Assay: Stem cells

Sample ID: G-CI3\_A.1

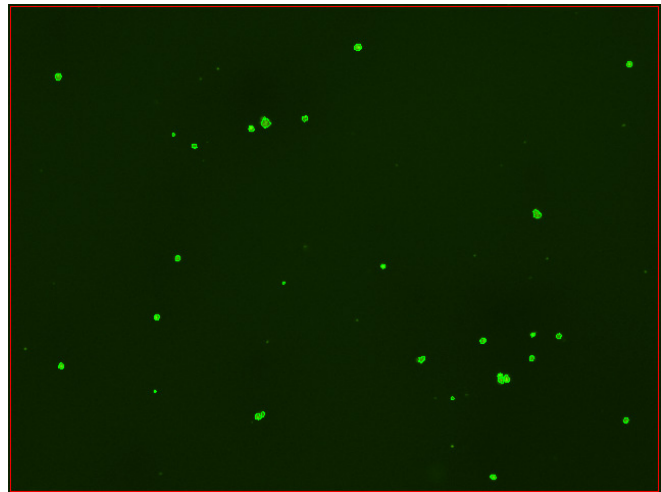
Dilution Factor: 2.00

Count	Concentration	Mean Diameter
=====	=====	=====
Total: 103 cells	$3.60 \times 10^5$ cells/mL	10.5 microns
Live: 77 cells	$2.70 \times 10^5$ cells/mL	10.9 microns
Dead: 26 cells	$9.06 \times 10^4$ cells/mL	9.1 microns

Viability: 74.9%



Original Images



Counted Images

