

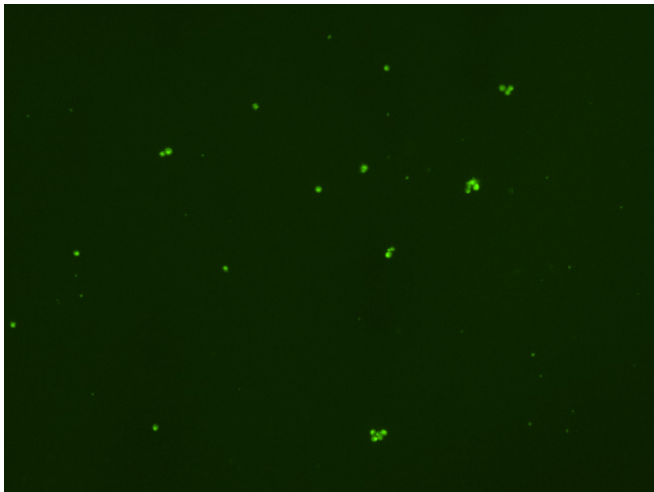
## Assay: Stem cells

Sample ID: G-CI3\_A.2

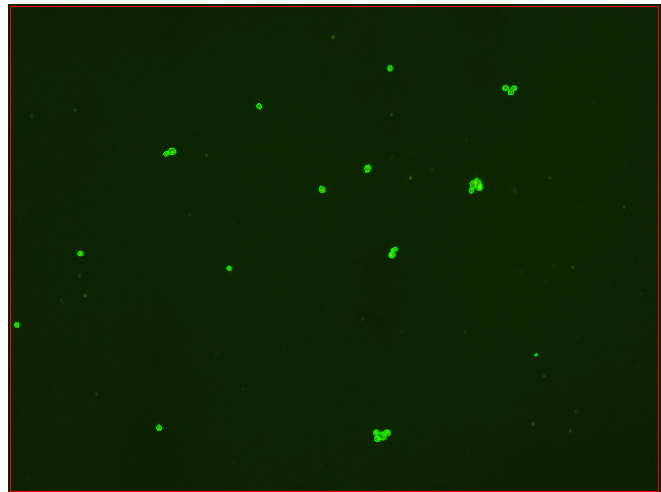
Dilution Factor: 2.00

Count	Concentration	Mean Diameter
===== Total: 121 cells	===== 4.23x10 <sup>5</sup> cells/mL	===== 10.3 microns
Live: 89 cells	3.12x10 <sup>5</sup> cells/mL	10.9 microns
Dead: 32 cells	1.11x10 <sup>5</sup> cells/mL	8.7 microns

Viability: 73.7%



Original Images



Counted Images

