

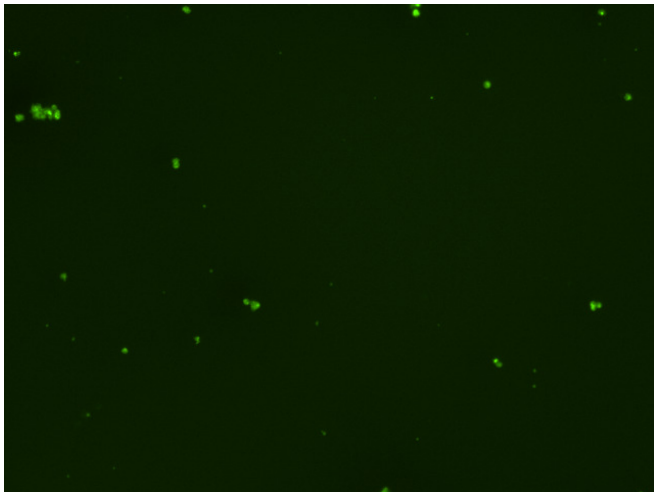
Assay: Stem cells

Sample ID: G-CI3_A.3

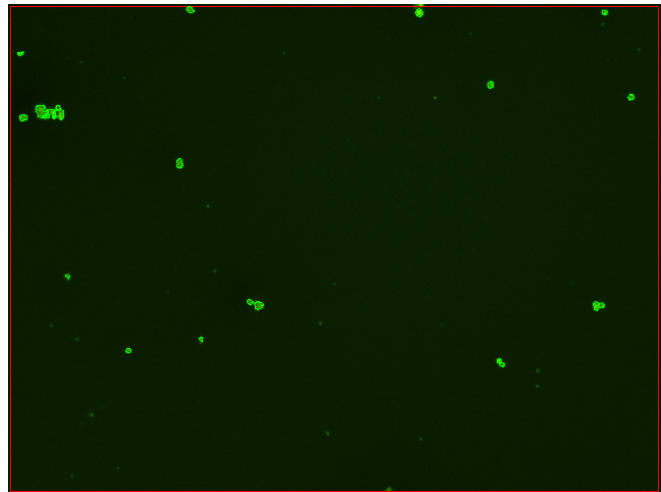
Dilution Factor: 2.00

| Count | Concentration | Mean Diameter |
|------------------|-----------------------------|---------------|
| ===== | ===== | ===== |
| Total: 129 cells | 4.53×10^5 cells/mL | 11.4 microns |
| Live: 81 cells | 2.85×10^5 cells/mL | 12.3 microns |
| Dead: 48 cells | 1.68×10^5 cells/mL | 9.8 microns |

Viability: 63.0%



Original Images



Counted Images

