

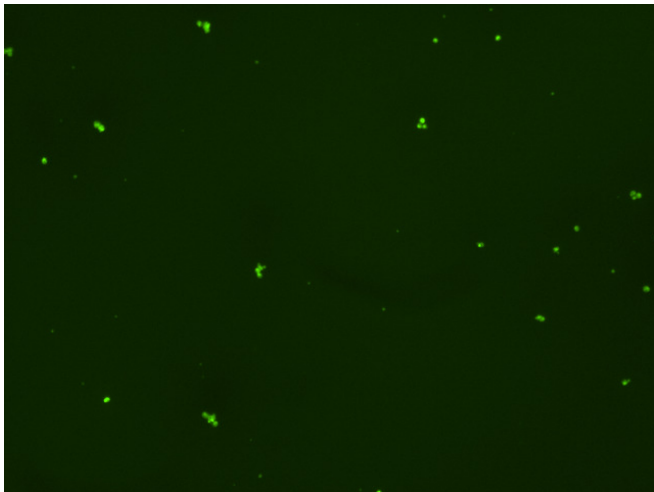
Assay: Stem cells

Sample ID: G-CI3_B.1

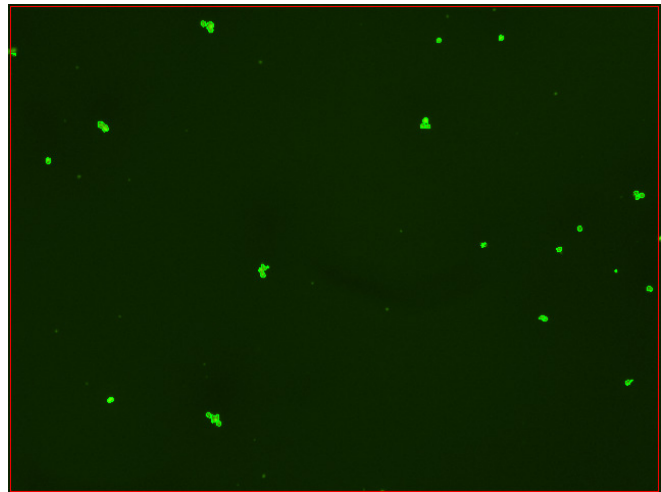
Dilution Factor: 2.00

| Count | Concentration | Mean Diameter |
|------------------|-----------------------------|---------------|
| ===== | ===== | ===== |
| Total: 125 cells | 4.38×10^5 cells/mL | 10.9 microns |
| Live: 107 cells | 3.75×10^5 cells/mL | 11.0 microns |
| Dead: 18 cells | 6.29×10^4 cells/mL | 9.9 microns |

Viability: 85.6%



Original Images



Counted Images

