

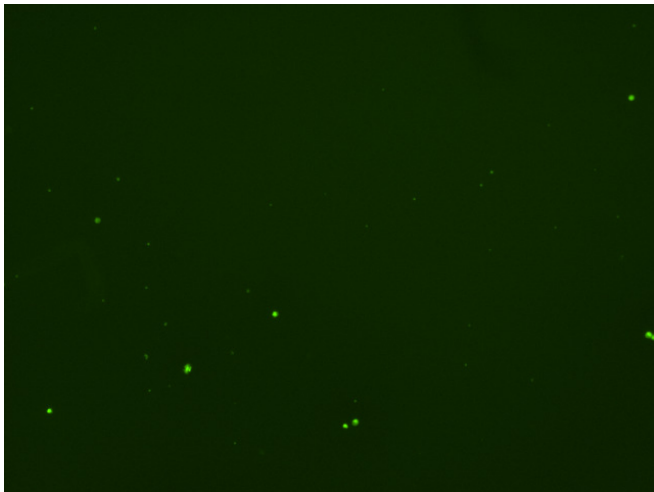
## Assay: Stem cells

Sample ID: G-CI3\_B.3

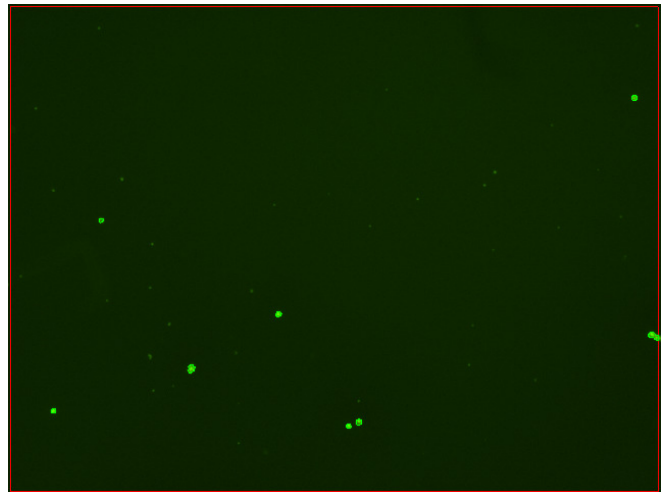
Dilution Factor: 2.00

Count	Concentration	Mean Diameter
=====	=====	=====
Total: 75 cells	$2.63 \times 10^5$ cells/mL	11.0 microns
Live: 50 cells	$1.76 \times 10^5$ cells/mL	11.9 microns
Dead: 25 cells	$8.71 \times 10^4$ cells/mL	9.1 microns

Viability: 66.9%



Original Images



Counted Images

