

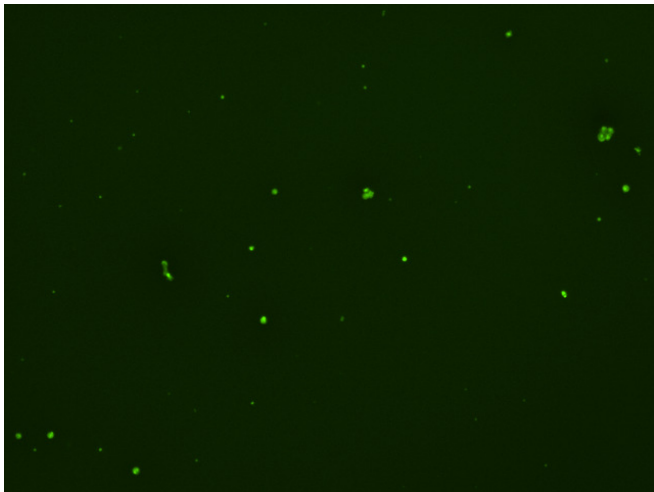
Assay: Stem cells

Sample ID: G-CI3_C.1

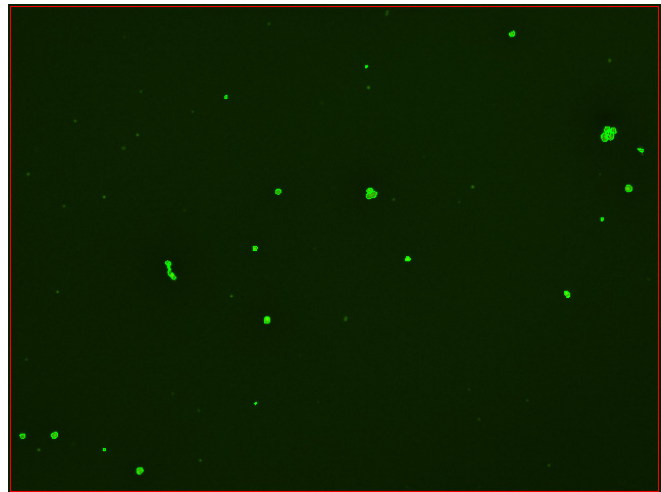
Dilution Factor: 2.00

Count	Concentration	Mean Diameter
=====	=====	=====
Total: 139 cells	4.86×10^5 cells/mL	10.4 microns
Live: 121 cells	4.24×10^5 cells/mL	10.7 microns
Dead: 18 cells	6.26×10^4 cells/mL	8.6 microns

Viability: 87.1%



Original Images



Counted Images

