

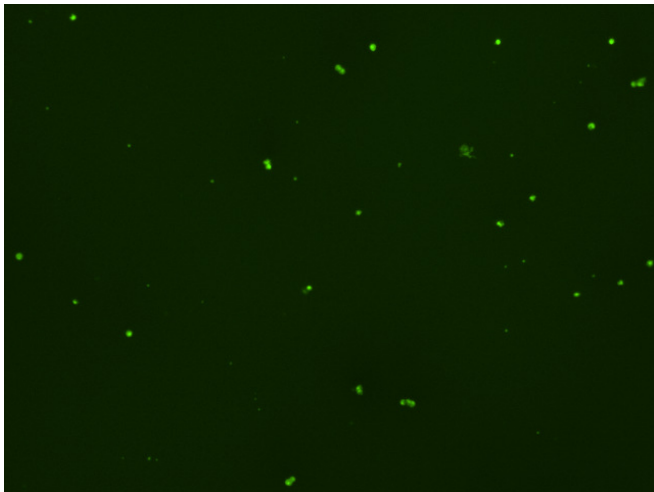
## Assay: Stem cells

Sample ID: G-CI3\_C.2

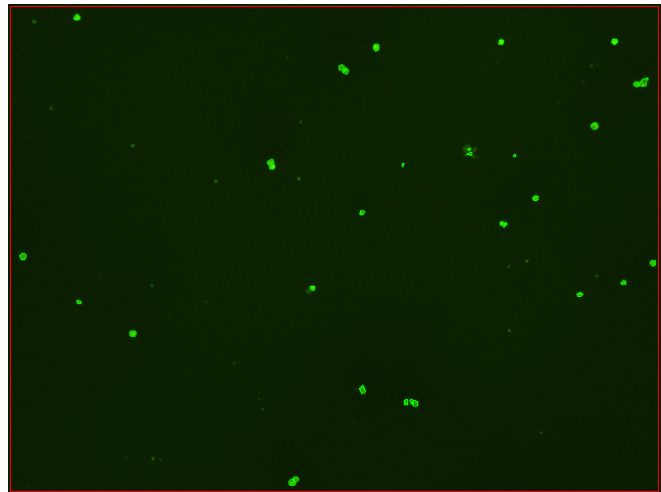
Dilution Factor: 2.00

Count	Concentration	Mean Diameter
===== Total: 116 cells Live: 98 cells Dead: 18 cells	===== 4.06x10 <sup>5</sup> cells/mL 3.43x10 <sup>5</sup> cells/mL 6.25x10 <sup>4</sup> cells/mL	===== 10.3 microns 10.6 microns 8.3 microns

Viability: 84.6%



Original Images



Counted Images

