

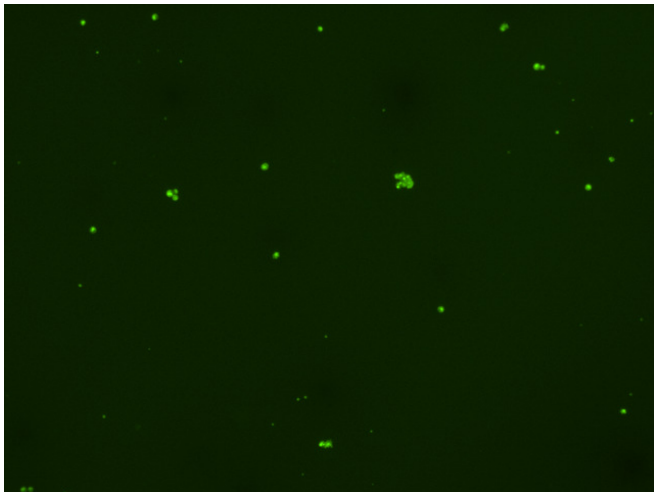
Assay: Stem cells

Sample ID: G-CI3_C.3

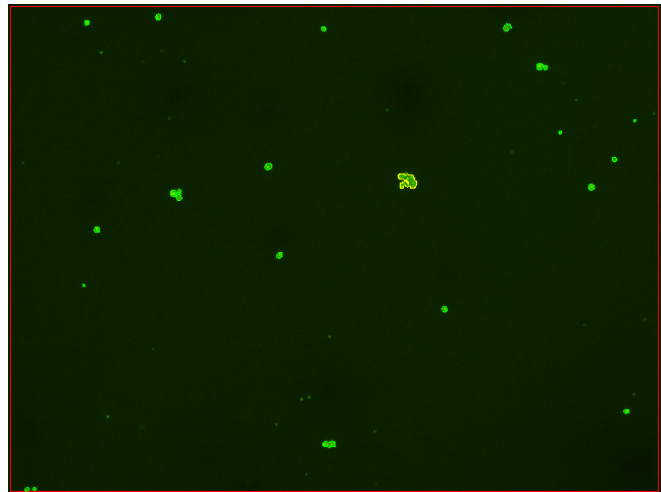
Dilution Factor: 2.00

Count	Concentration	Mean Diameter
=====	=====	=====
Total: 107 cells	3.75×10^5 cells/mL	10.9 microns
Live: 89 cells	3.12×10^5 cells/mL	11.5 microns
Dead: 18 cells	6.25×10^4 cells/mL	8.2 microns

Viability: 83.3%



Original Images



Counted Images

