

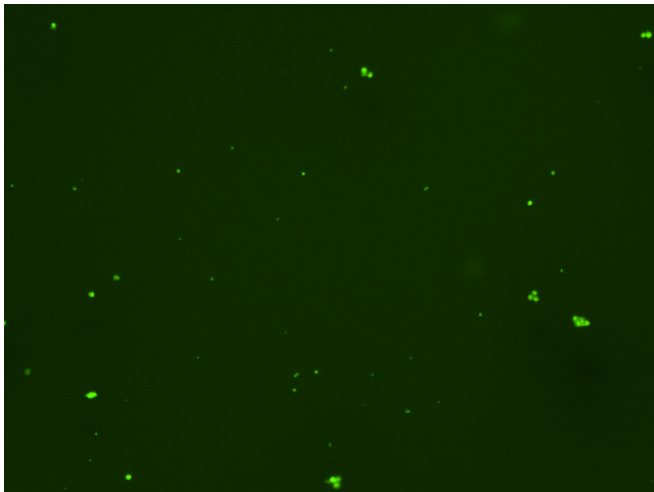
Assay: Stem cells

Sample ID: G-CI3_CS10.1

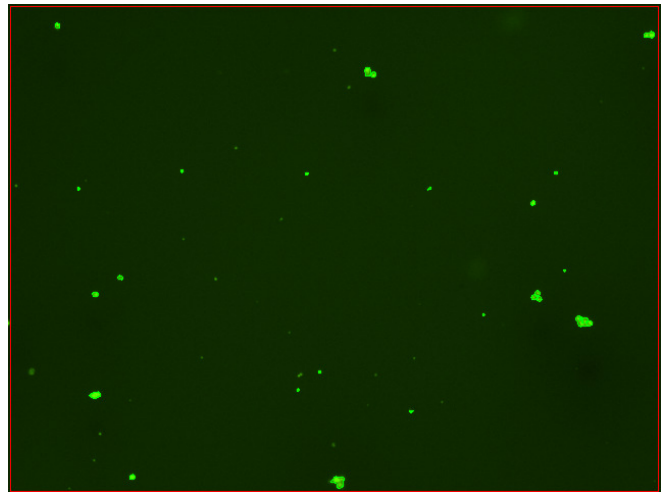
Dilution Factor: 2.00

Count	Concentration	Mean Diameter
===== Total: 138 cells	===== 4.83x10 ⁵ cells/mL	===== 10.8 microns
Live: 111 cells	3.89x10 ⁵ cells/mL	11.3 microns
Dead: 27 cells	9.41x10 ⁴ cells/mL	9.1 microns

Viability: 80.5%



Original Images



Counted Images

