

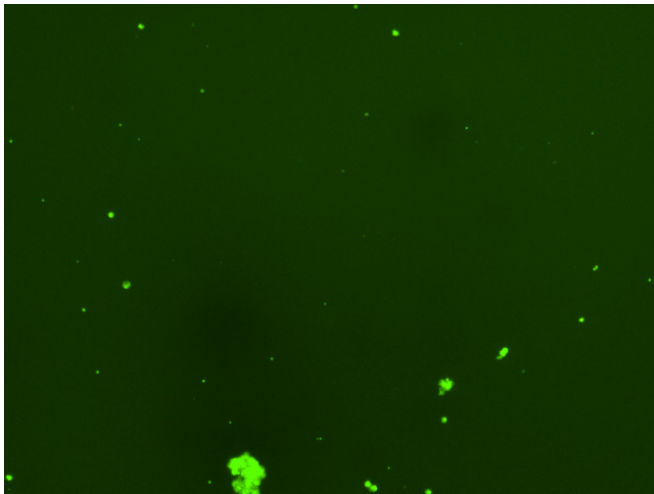
## Assay: Stem cells

Sample ID: G-Cl3\_CS10.2

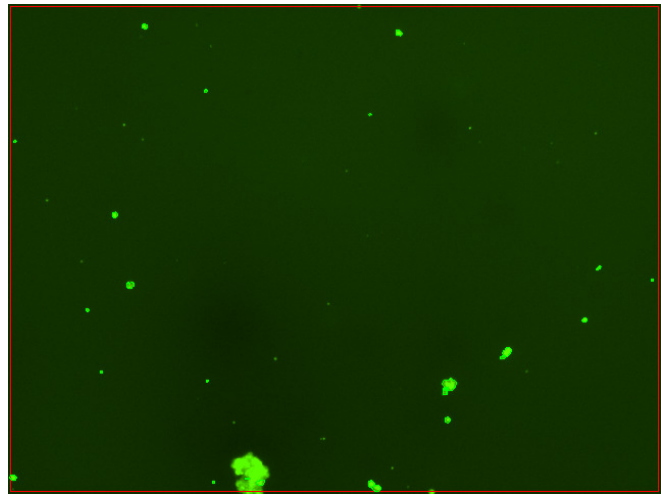
Dilution Factor: 2.00

Count	Concentration	Mean Diameter
===== Total: 120 cells Live: 92 cells Dead: 28 cells	===== 4.20x10 <sup>5</sup> cells/mL 3.23x10 <sup>5</sup> cells/mL 9.73x10 <sup>4</sup> cells/mL	===== 10.6 microns 11.3 microns 8.2 microns

Viability: 76.8%



Original Images



Counted Images

