

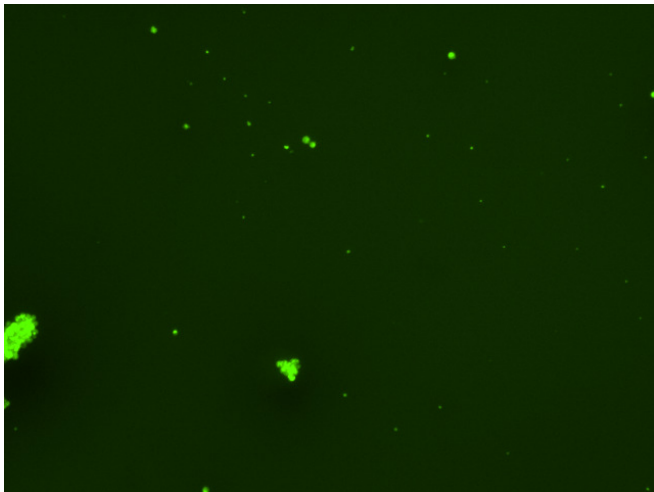
## Assay: Stem cells

Sample ID: G-Cl3\_CS10.3

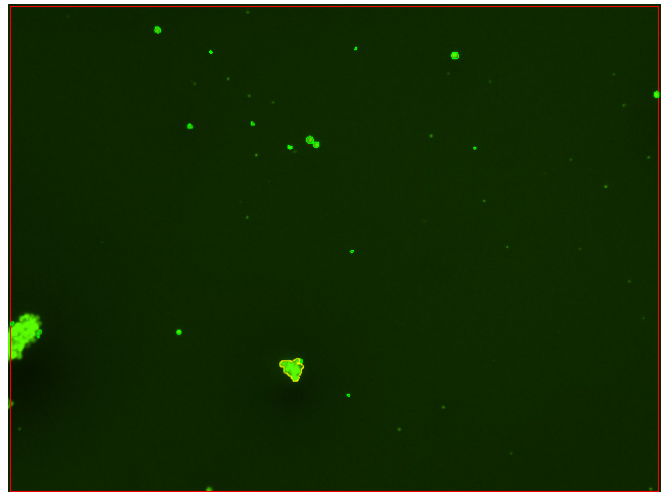
Dilution Factor: 2.00

Count	Concentration	Mean Diameter
=====	=====	=====
Total: 90 cells	$3.14 \times 10^5$ cells/mL	9.6 microns
Live: 65 cells	$2.27 \times 10^5$ cells/mL	9.9 microns
Dead: 25 cells	$8.70 \times 10^4$ cells/mL	8.8 microns

Viability: 72.3%



Original Images



Counted Images

