

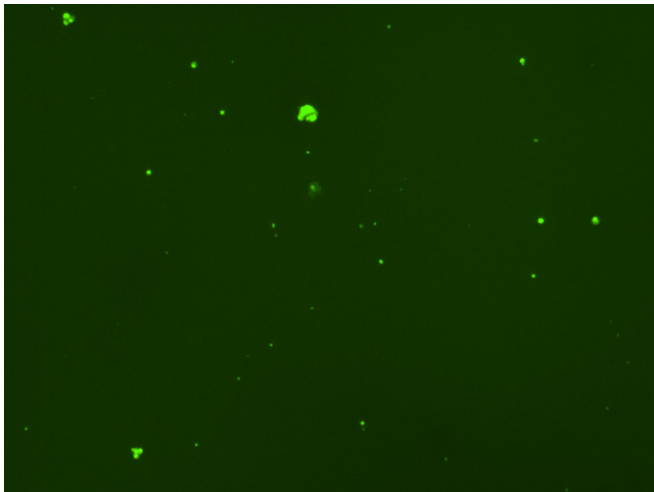
Assay: Stem cells

Sample ID: G-Cl3_CS5.1

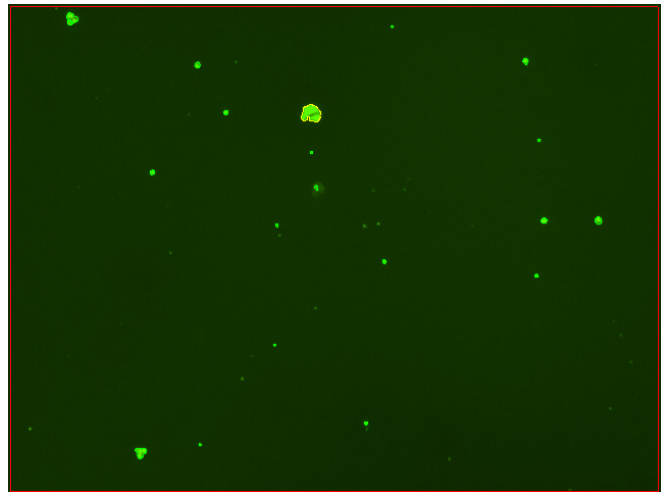
Dilution Factor: 2.00

Count	Concentration	Mean Diameter
===== Total: 90 cells Live: 69 cells Dead: 21 cells	===== 3.15x10 ⁵ cells/mL 2.42x10 ⁵ cells/mL 7.31x10 ⁴ cells/mL	===== 11.1 microns 11.7 microns 8.8 microns

Viability: 76.8%



Original Images



Counted Images

