

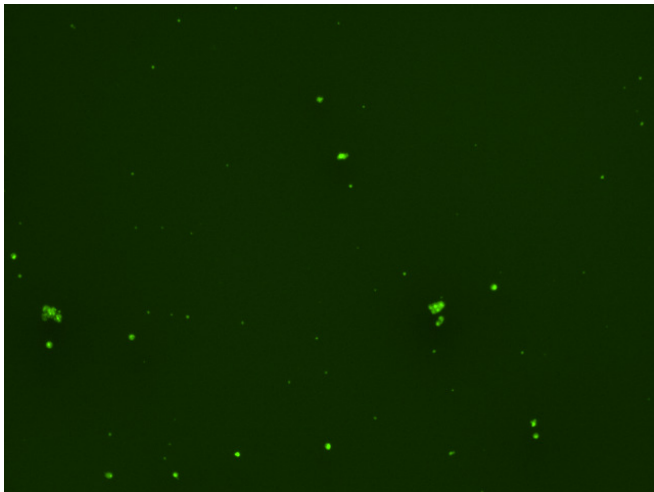
## Assay: Stem cells

Sample ID: G-CI3\_CS5.2

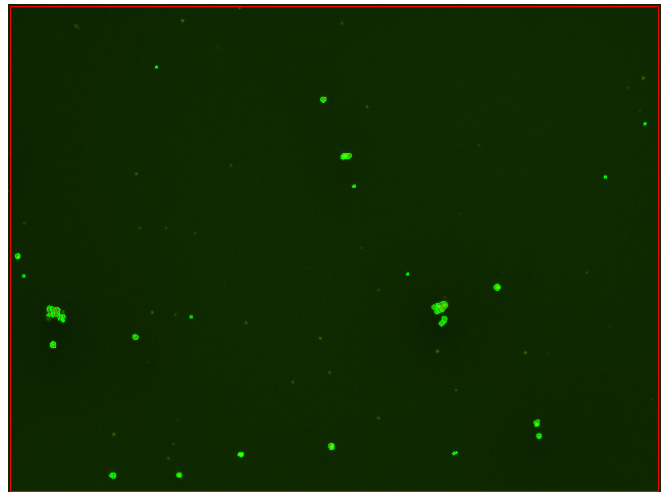
Dilution Factor: 2.00

Count	Concentration	Mean Diameter
=====	=====	=====
Total: 108 cells	$3.78 \times 10^5$ cells/mL	10.6 microns
Live: 88 cells	$3.09 \times 10^5$ cells/mL	11.1 microns
Dead: 20 cells	$6.95 \times 10^4$ cells/mL	8.2 microns

Viability: 81.6%



Original Images



Counted Images

