

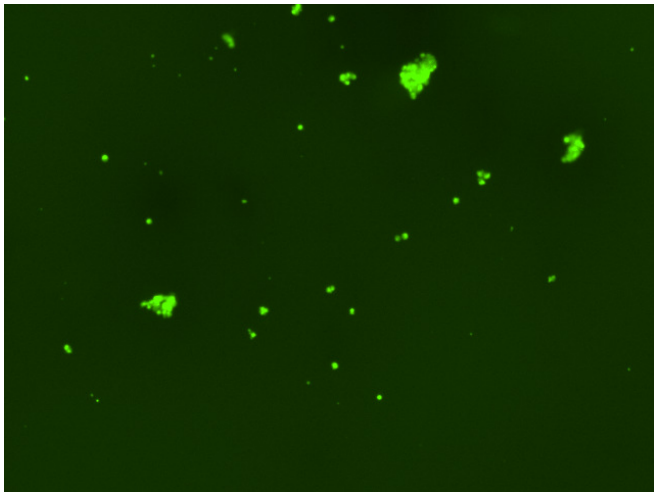
## Assay: Stem cells

Sample ID: G-CI3\_CS5.3

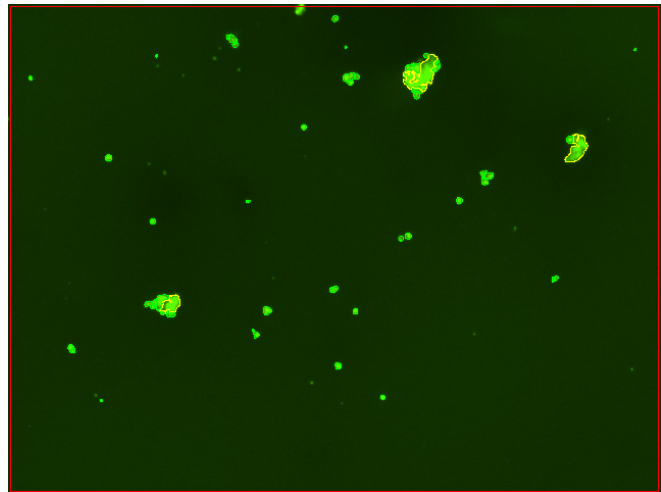
Dilution Factor: 2.00

Count	Concentration	Mean Diameter
=====	=====	=====
Total: 130 cells	$4.55 \times 10^5$ cells/mL	10.7 microns
Live: 98 cells	$3.43 \times 10^5$ cells/mL	11.0 microns
Dead: 32 cells	$1.12 \times 10^5$ cells/mL	9.7 microns

Viability: 75.5%



Original Images



Counted Images

