

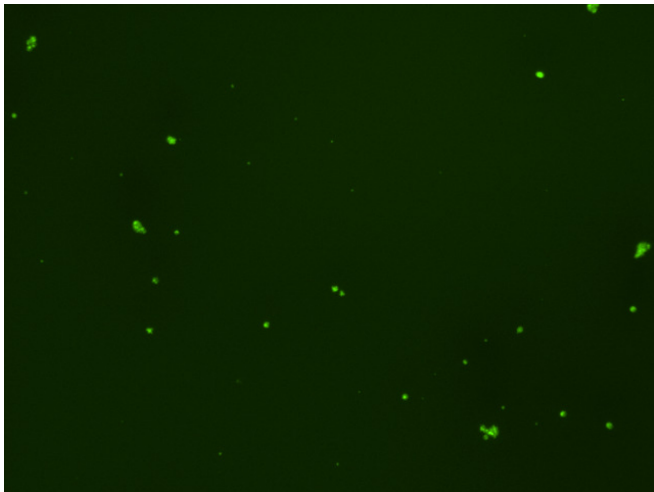
Assay: Stem cells

Sample ID: G-CI3_D.1

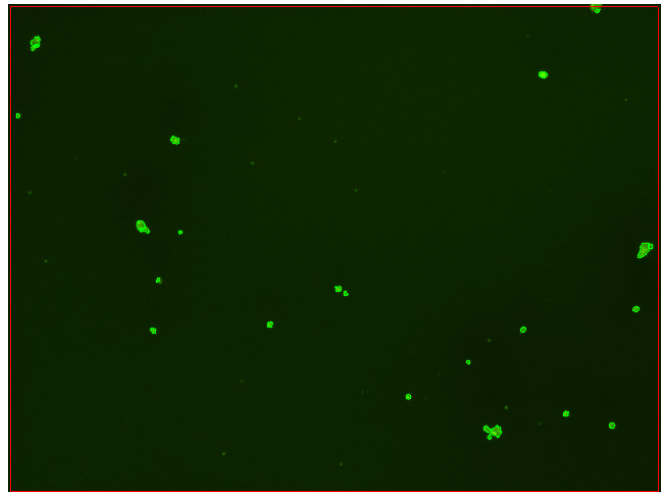
Dilution Factor: 2.00

Count	Concentration	Mean Diameter
===== Total: 92 cells Live: 77 cells Dead: 15 cells	===== 3.23x10 ⁵ cells/mL 2.71x10 ⁵ cells/mL 5.21x10 ⁴ cells/mL	===== 11.2 microns 11.8 microns 8.0 microns

Viability: 83.9%



Original Images



Counted Images

