

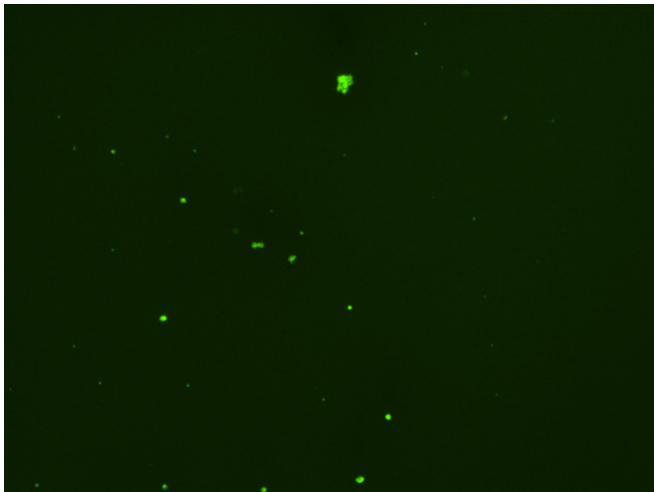
Assay: Stem cells

Sample ID: G-CI3_D.2

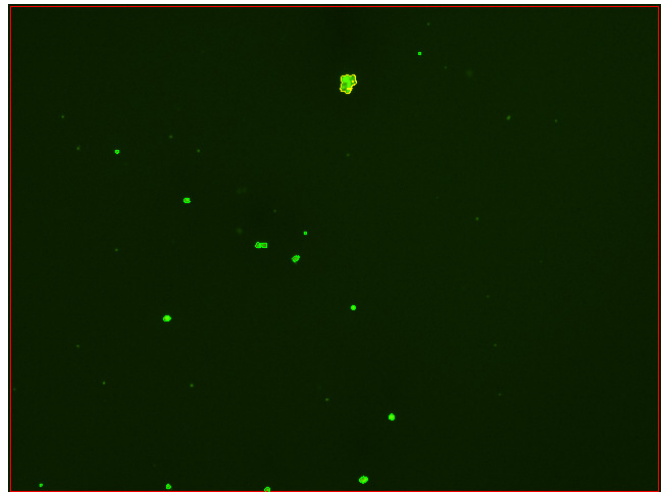
Dilution Factor: 2.00

Count	Concentration	Mean Diameter
=====	=====	=====
Total: 91 cells	3.17×10^5 cells/mL	9.6 microns
Live: 69 cells	2.41×10^5 cells/mL	9.9 microns
Dead: 22 cells	7.65×10^4 cells/mL	8.5 microns

Viability: 75.9%



Original Images



Counted Images

