

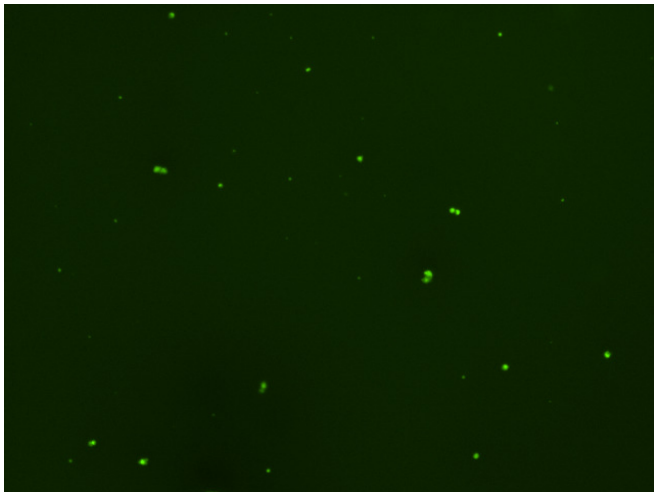
Assay: Stem cells

Sample ID: G-CI3_D.3

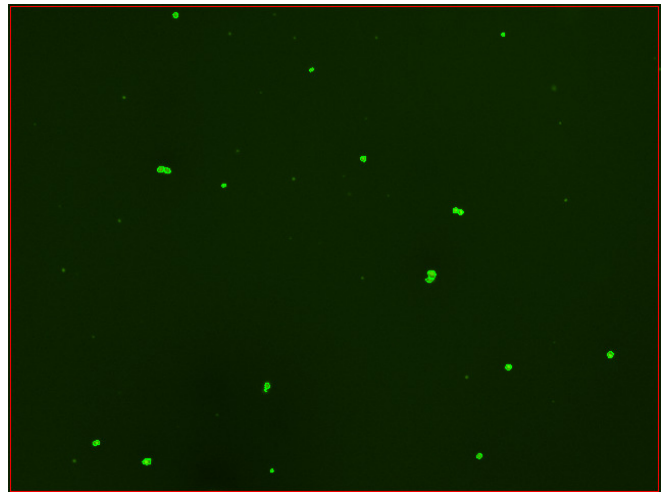
Dilution Factor: 2.00

Count	Concentration	Mean Diameter
=====	=====	=====
Total: 87 cells	3.05×10^5 cells/mL	10.8 microns
Live: 67 cells	2.35×10^5 cells/mL	11.5 microns
Dead: 20 cells	6.95×10^4 cells/mL	8.3 microns

Viability: 77.2%



Original Images



Counted Images

