

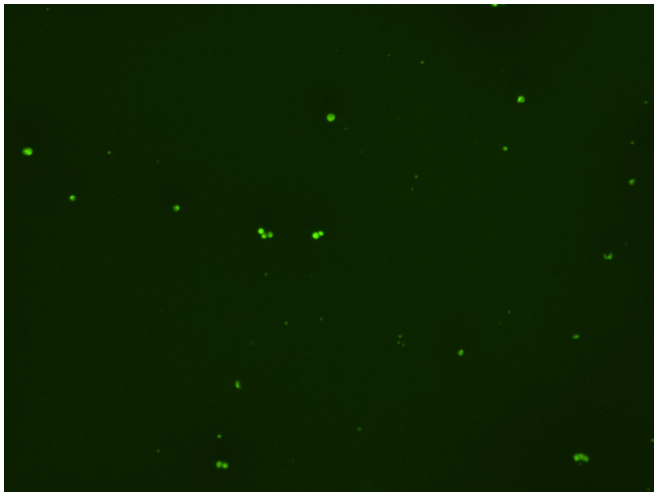
Assay: Stem cells

Sample ID: G-CI3_E.1

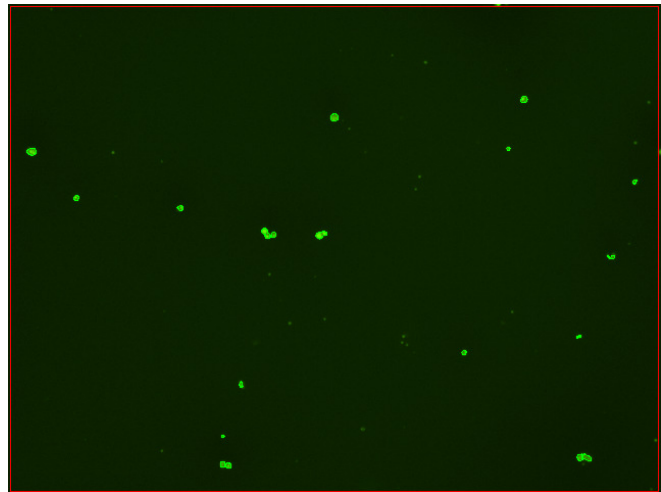
Dilution Factor: 2.00

| Count | Concentration | Mean Diameter |
|--|--|--|
| ===== Total: 89 cells Live: 71 cells Dead: 18 cells | ===== 3.12x10 ⁵ cells/mL 2.49x10 ⁵ cells/mL 6.26x10 ⁴ cells/mL | ===== 10.8 microns 11.4 microns 8.4 microns |

Viability: 79.9%



Original Images



Counted Images

