

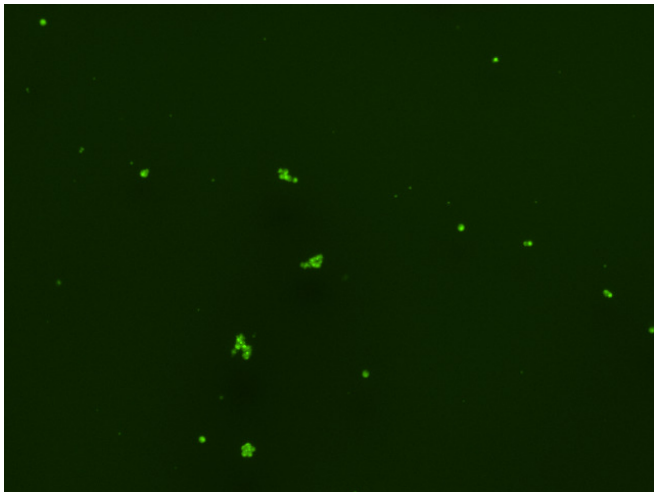
Assay: Stem cells

Sample ID: G-CI3_E.3

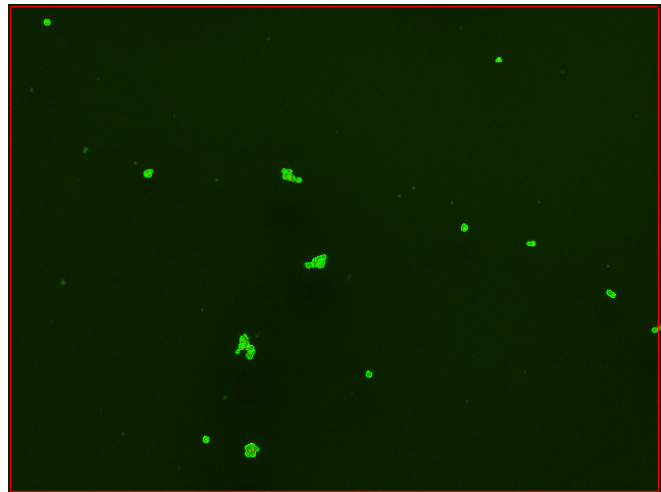
Dilution Factor: 2.00

Count	Concentration	Mean Diameter
=====	=====	=====
Total: 75 cells	2.63×10^5 cells/mL	11.5 microns
Live: 57 cells	2.01×10^5 cells/mL	12.2 microns
Dead: 18 cells	6.28×10^4 cells/mL	9.5 microns

Viability: 76.2%



Original Images



Counted Images

