

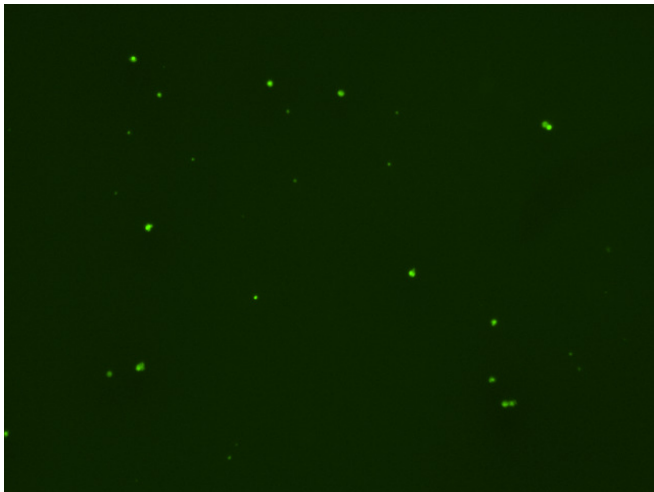
Assay: Stem cells

Sample ID: J-CI5_A.1

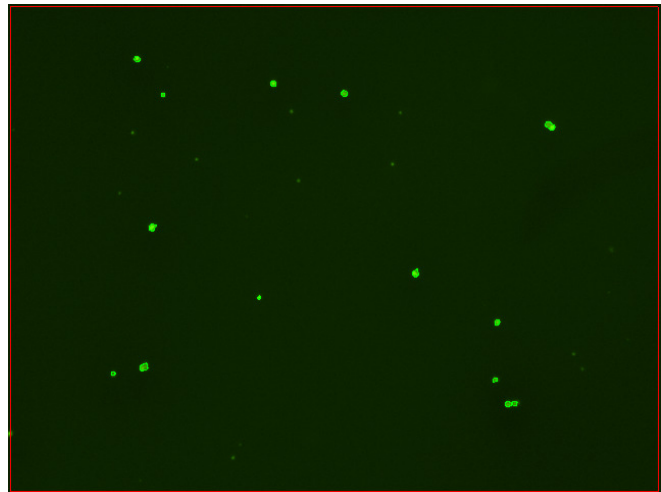
Dilution Factor: 2.00

Count	Concentration	Mean Diameter
===== Total: 70 cells Live: 58 cells Dead: 12 cells	===== 2.46x10 ⁵ cells/mL 2.04x10 ⁵ cells/mL 4.18x10 ⁴ cells/mL	===== 12.0 microns 12.6 microns 9.1 microns

Viability: 83.0%



Original Images



Counted Images

