

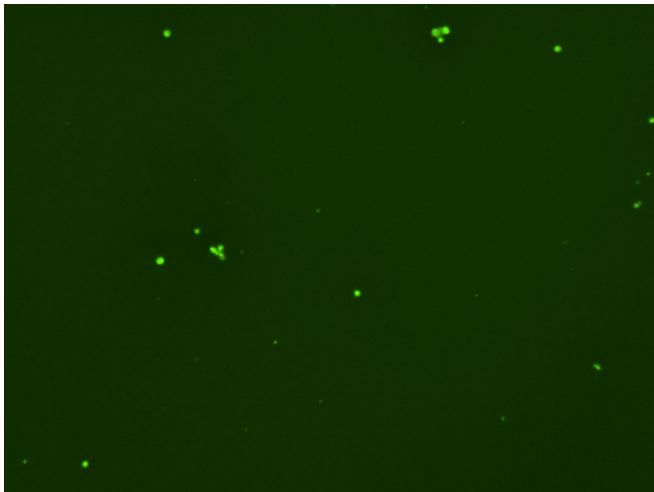
Assay: Stem cells

Sample ID: J-CI5_A.2

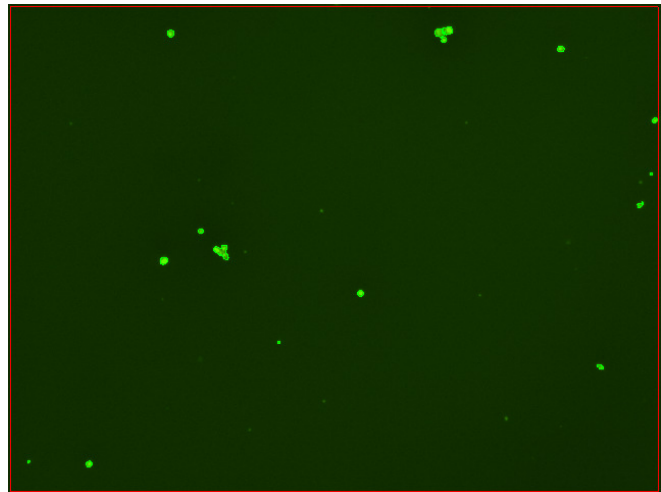
Dilution Factor: 2.00

Count	Concentration	Mean Diameter
===== Total: 83 cells Live: 62 cells Dead: 21 cells	===== 2.92x10 ⁵ cells/mL 2.19x10 ⁵ cells/mL 7.31x10 ⁴ cells/mL	===== 11.9 microns 12.9 microns 9.0 microns

Viability: 74.9%



Original Images



Counted Images

