

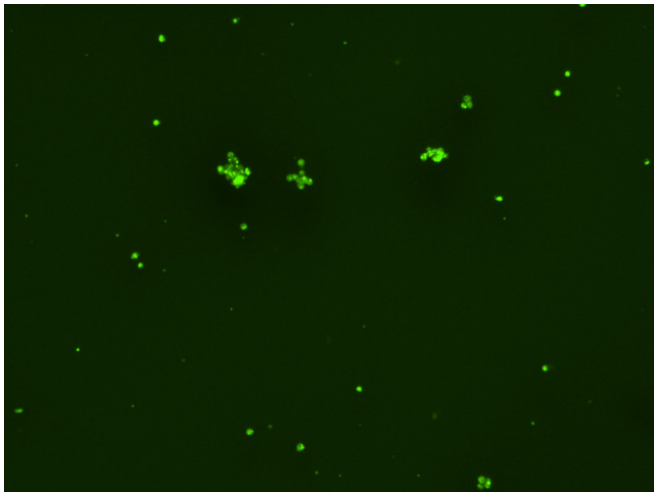
## Assay: Stem cells

Sample ID: J-CI5\_A.3

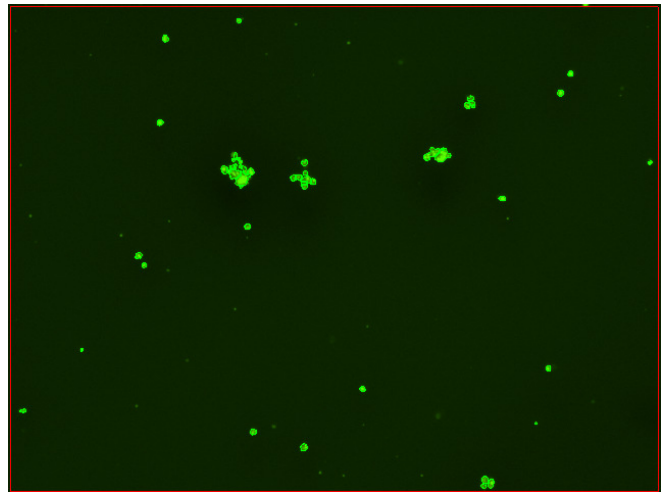
Dilution Factor: 2.00

Count	Concentration	Mean Diameter
=====	=====	=====
Total: 168 cells	$5.90 \times 10^5$ cells/mL	11.5 microns
Live: 141 cells	$4.96 \times 10^5$ cells/mL	11.9 microns
Dead: 27 cells	$9.41 \times 10^4$ cells/mL	9.3 microns

Viability: 84.0%



Original Images



Counted Images

