

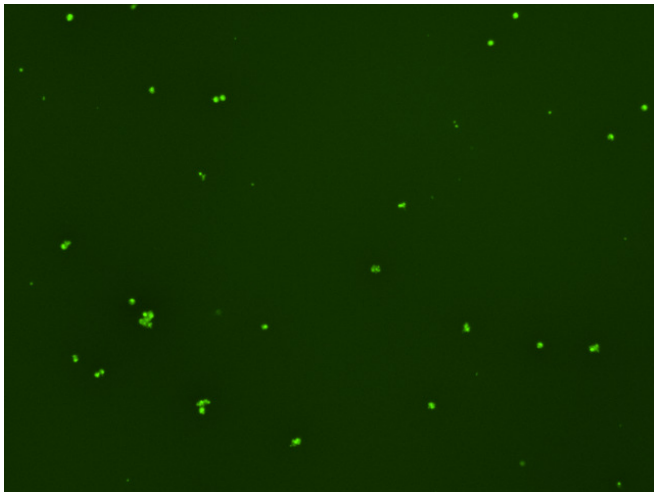
Assay: Stem cells

Sample ID: J-CI5_B.1

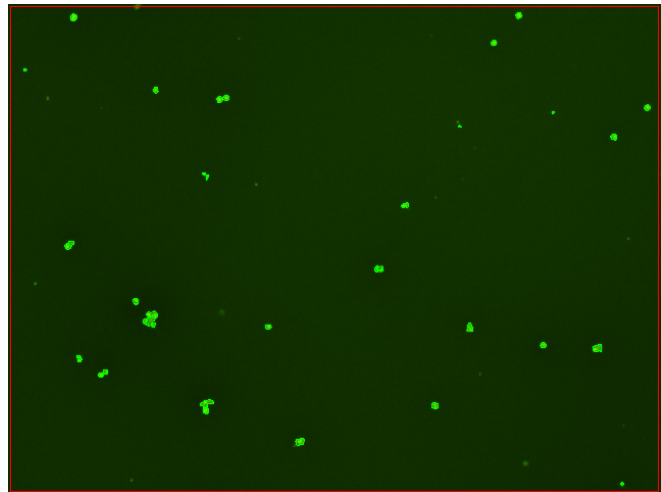
Dilution Factor: 2.00

Count	Concentration	Mean Diameter
=====	=====	=====
Total: 127 cells	4.46×10^5 cells/mL	11.3 microns
Live: 115 cells	4.04×10^5 cells/mL	11.6 microns
Dead: 12 cells	4.18×10^4 cells/mL	9.2 microns

Viability: 90.6%



Original Images



Counted Images

