

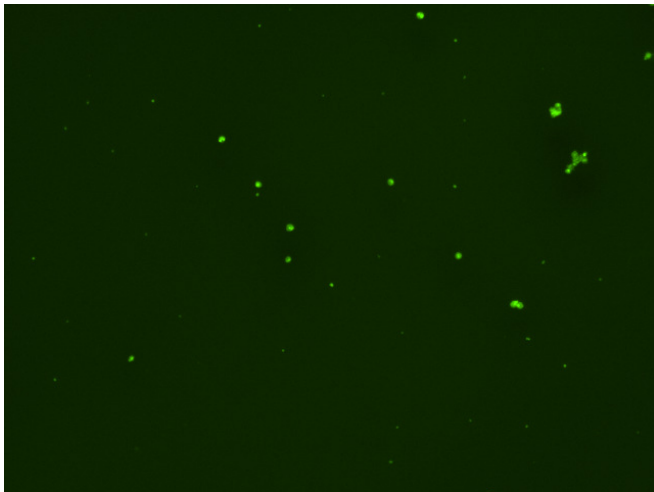
## Assay: Stem cells

Sample ID: J-CI5\_B.2

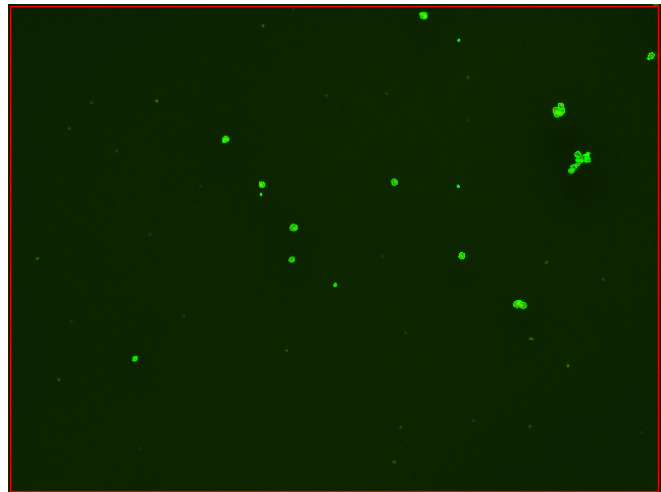
Dilution Factor: 2.00

Count	Concentration	Mean Diameter
=====	=====	=====
Total: 138 cells	$4.84 \times 10^5$ cells/mL	11.3 microns
Live: 124 cells	$4.35 \times 10^5$ cells/mL	11.6 microns
Dead: 14 cells	$4.87 \times 10^4$ cells/mL	8.4 microns

Viability: 89.9%



Original Images



Counted Images

