

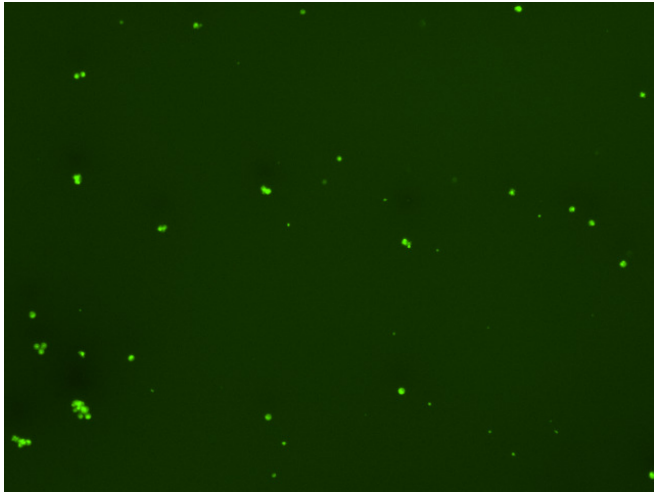
## Assay: Stem cells

Sample ID: J-CI5\_B.3

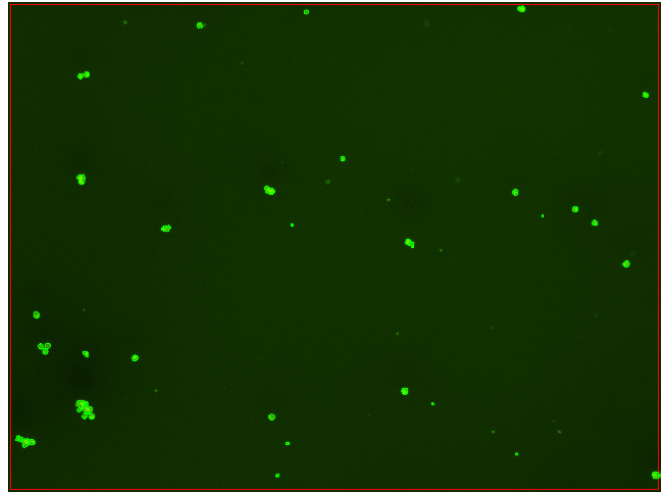
Dilution Factor: 2.00

Count	Concentration	Mean Diameter
===== Total: 141 cells	===== 4.94x10 <sup>5</sup> cells/mL	===== 10.7 microns
Live: 122 cells	4.27x10 <sup>5</sup> cells/mL	10.9 microns
Dead: 19 cells	6.62x10 <sup>4</sup> cells/mL	9.4 microns

Viability: 86.6%



Original Images



Counted Images

