

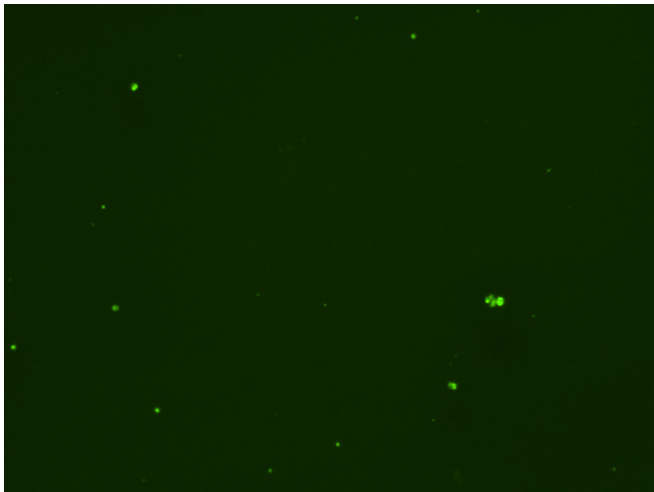
Assay: Stem cells

Sample ID: J-CI5_C.1

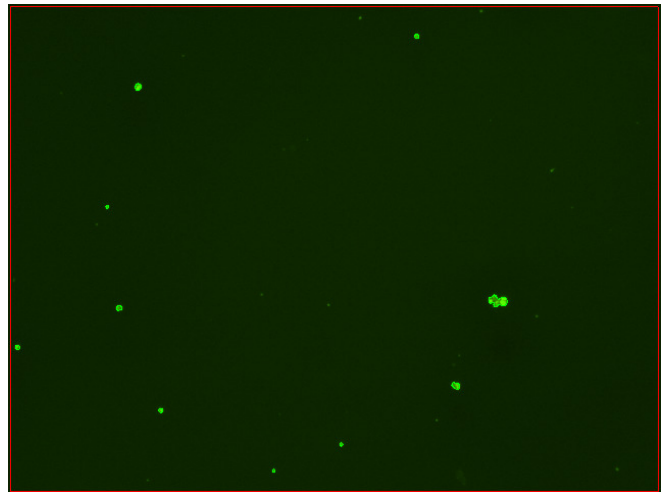
Dilution Factor: 2.00

Count	Concentration	Mean Diameter
===== Total: 104 cells Live: 78 cells Dead: 26 cells	===== 3.65x10 ⁵ cells/mL 2.74x10 ⁵ cells/mL 9.05x10 ⁴ cells/mL	===== 11.2 microns 12.0 microns 8.8 microns

Viability: 75.2%



Original Images



Counted Images

