

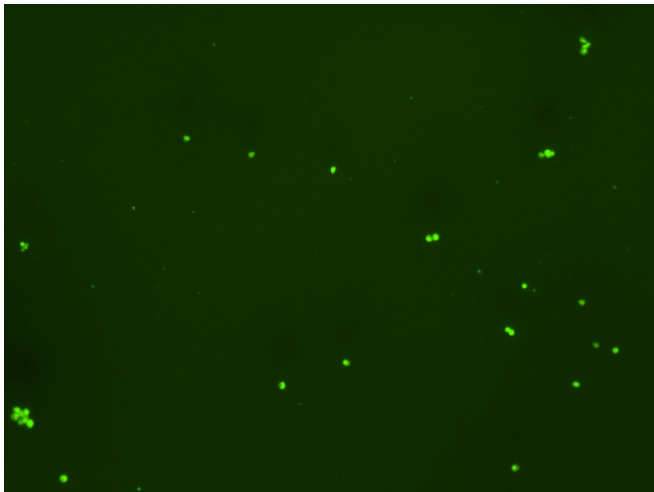
Assay: Stem cells

Sample ID: J-CI5_C.2

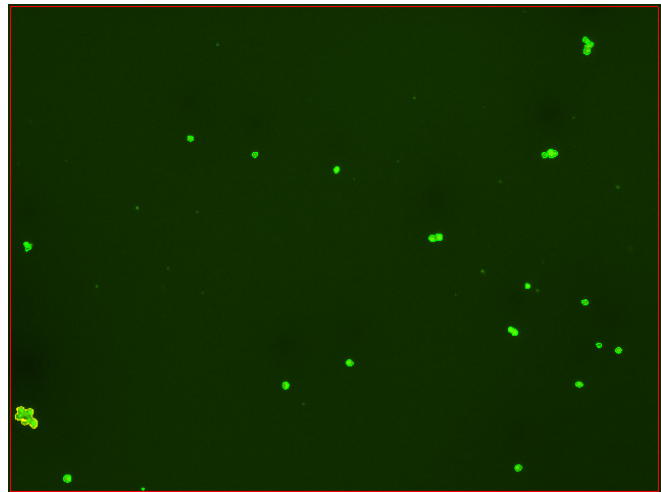
Dilution Factor: 2.00

Count	Concentration	Mean Diameter
=====	=====	=====
Total: 94 cells	3.31×10^5 cells/mL	12.4 microns
Live: 82 cells	2.89×10^5 cells/mL	13.0 microns
Dead: 12 cells	4.17×10^4 cells/mL	8.3 microns

Viability: 87.4%



Original Images



Counted Images

