

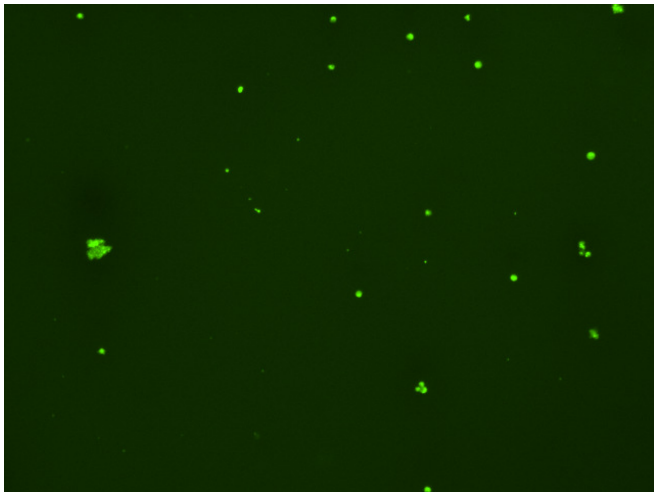
Assay: Stem cells

Sample ID: J-CI5_C.3

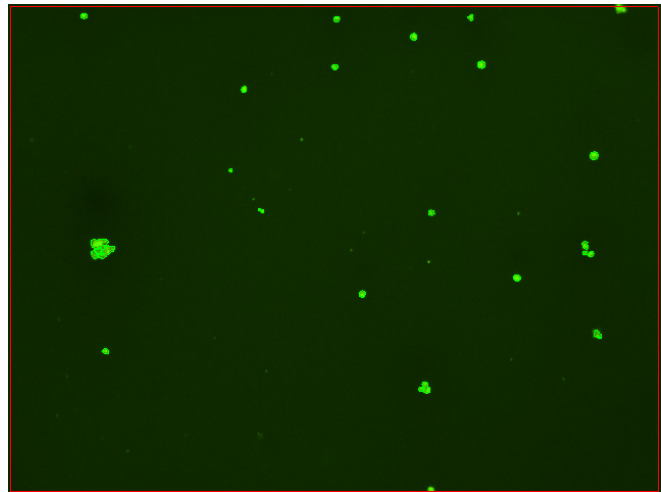
Dilution Factor: 2.00

Count	Concentration	Mean Diameter
=====	=====	=====
Total: 142 cells	4.99×10^5 cells/mL	11.6 microns
Live: 123 cells	4.32×10^5 cells/mL	12.0 microns
Dead: 19 cells	6.60×10^4 cells/mL	8.5 microns

Viability: 86.8%



Original Images



Counted Images

