

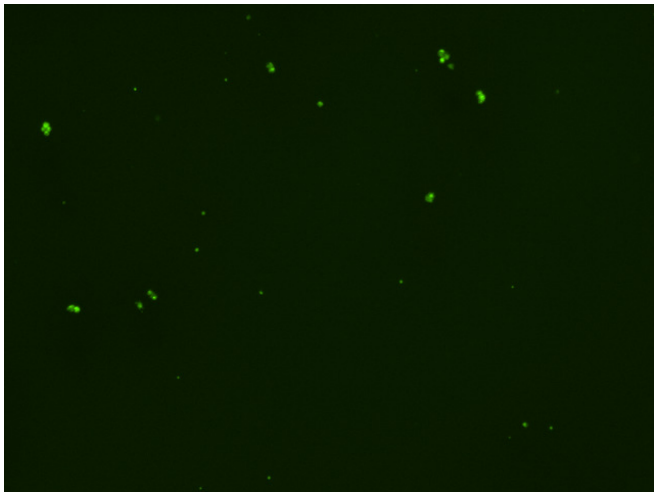
## Assay: Stem cells

Sample ID: J-CI5\_CS10.1

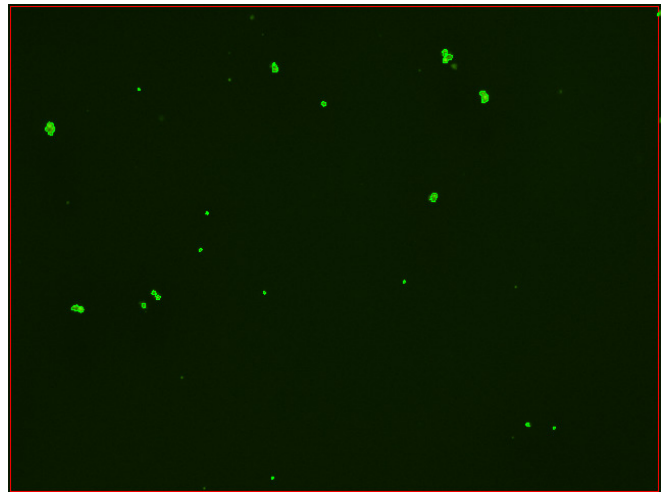
Dilution Factor: 2.00

Count	Concentration	Mean Diameter
=====	=====	=====
Total: 144 cells	$5.04 \times 10^5$ cells/mL	10.7 microns
Live: 124 cells	$4.34 \times 10^5$ cells/mL	10.9 microns
Dead: 20 cells	$6.97 \times 10^4$ cells/mL	9.3 microns

Viability: 86.2%



Original Images



Counted Images

